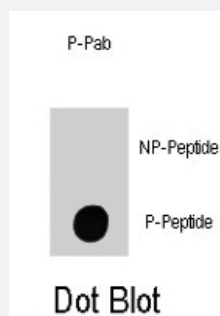


# ILK (phospho T173) polyclonal antibody

Catalog # PAB1640      Size 400 uL

## Applications



### Dot Blot (Peptide)

Dot blot analysis of ILK (phospho T173) polyclonal antibody (Cat # PAB1640) on nitrocellulose membrane. 50 ng of Phospho-peptide or Non Phospho-peptide per dot were adsorbed.

## Specification

<b>Product Description</b>	Rabbit polyclonal antibody raised against synthetic phosphopeptide of ILK.
<b>Immunogen</b>	Synthetic phosphopeptide (conjugated with KLH) corresponding to residues surrounding T173 of human ILK.
<b>Host</b>	Rabbit
<b>Reactivity</b>	Human
<b>Form</b>	Liquid
<b>Purification</b>	Protein A purification
<b>Recommend Usage</b>	Dot Blot (1:500) The optimal working dilution should be determined by the end user.
<b>Storage Buffer</b>	In PBS (0.09% sodium azide)
<b>Storage Instruction</b>	Store at 4°C. For long term storage store at -20°C. Aliquot to avoid repeated freezing and thawing.
<b>Note</b>	This product contains sodium azide: a POISONOUS AND HAZARDOUS SUBSTANCE which should be handled by trained staff only.

## Applications

- Dot Blot (Peptide)

Dot blot analysis of ILK (phospho T173) polyclonal antibody (Cat # PAB1640) on nitrocellulose membrane. 50 ng of Phospho-peptide or Non Phospho-peptide per dot were adsorbed.

## Gene Info — ILK

Entrez GeneID [3611](#)

Protein Accession# [Q13418;NP\\_004508](#)

Gene Name ILK

Gene Alias DKFZp686F1765, P59

Gene Description integrin-linked kinase

Omim ID [602366](#)

Gene Ontology [Hyperlink](#)

**Gene Summary** Transduction of extracellular matrix signals through integrins influences intracellular and extracellular functions, and appears to require interaction of integrin cytoplasmic domains with cellular proteins. Integrin-linked kinase (ILK), interacts with the cytoplasmic domain of beta-1 integrin. This gene encodes a serine/threonine protein kinase with 4 ankyrin-like repeats, which associates with the cytoplasmic domain of beta integrins and acts as a proximal receptor kinase regulating integrin-mediated signal transduction. Multiple alternatively spliced transcript variants encoding the same protein have been found for this gene. [provided by RefSeq]

Other Designations -

## Publication Reference

- [Role for integrin-linked kinase in mediating tubular epithelial to mesenchymal transition and renal interstitial fibrogenesis.](#)

Li Y, Yang J, Dai C, Wu C, Liu Y.

The Journal of Clinical Investigation 2003 Aug; 112(4):503.

- [Characterisation of integrin-linked kinase signalling in sporadic human colon cancer.](#)

Marotta A, Parhar K, Owen D, Dedhar S, Salh B.

British Journal of Cancer 2003 Jun; 88(11):1755.

- [Conditional knock-out of integrin-linked kinase demonstrates an essential role in protein kinase B/Akt activation.](#)

Troussard AA, Mawji NM, Ong C, Mui A, St -Arnaud R, Dedhar S.

The Journal of Biological Chemistry 2003 Apr; 278(25):22374.

## Pathway

- [Endometrial cancer](#)
- [Focal adhesion](#)
- [PPAR signaling pathway](#)