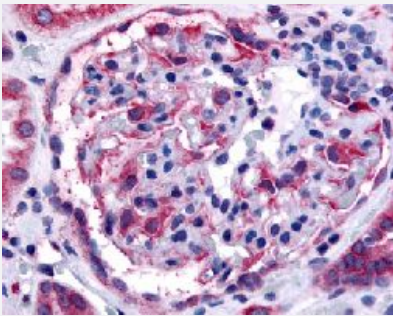


EPHA4 polyclonal antibody

Catalog # PAB16285

Size 50 ug

Applications



Immunohistochemistry (Formalin/PFA-fixed paraffin-embedded sections)

Immunohistochemical (Formalin/PFA-fixed paraffin-embedded sections) staining in human glomerulus with EPHA4 polyclonal antibody (Cat # PAB16285).

Specification

Product Description	Rabbit polyclonal antibody raised against synthetic peptide of EPHA4.
Immunogen	A synthetic peptide (conjugated with KLH) corresponding to human EPHA4.
Host	Rabbit
Reactivity	Human, Monkey
Specificity	Internal domain of human.
Form	Liquid
Purification	Immunoaffinity purification
Recommend Usage	Immunohistochemistry (Formalin/PFA-fixed paraffin-embedded sections) (6 ug/mL) The optimal working dilution should be determined by the end user.
Storage Buffer	In PBS (0.09% sodium azide)
Storage Instruction	Store at 4°C. For long term storage store at -80°C. Aliquot to avoid repeated freezing and thawing.

Note

This product contains sodium azide: a POISONOUS AND HAZARDOUS SUBSTANCE which should be handled by trained staff only.

Applications

- Immunohistochemistry (Formalin/PFA-fixed paraffin-embedded sections)

Immunohistochemical (Formalin/PFA-fixed paraffin-embedded sections) staining in human glomerulus with EPHA4 polyclonal antibody (Cat # PAB16285).

Gene Info — EPHA4

Entrez GeneID [2043](#)

Protein Accession# [P54764](#)

Gene Name EPHA4

Gene Alias HEK8, SEK, TYRO1

Gene Description EPH receptor A4

Omim ID [602188](#)

Gene Ontology [Hyperlink](#)

Gene Summary This gene belongs to the ephrin receptor subfamily of the protein-tyrosine kinase family. EPH and EPH-related receptors have been implicated in mediating developmental events, particularly in the nervous system. Receptors in the EPH subfamily typically have a single kinase domain and an extracellular region containing a Cys-rich domain and 2 fibronectin type III repeats. The ephrin receptors are divided into 2 groups based on the similarity of their extracellular domain sequences and their affinities for binding ephrin-A and ephrin-B ligands. [provided by RefSeq]

Other Designations OTTHUMP00000164185|TYRO1 protein tyrosine kinase|ephrin receptor EphA4|ephrin type-A receptor 4|receptor protein-tyrosine kinase HEK8|tyrosine-protein kinase receptor SEK

Pathway

- [Axon guidance](#)

Disease

- [Alzheimer Disease](#)
- [Cognition Disorders](#)
- [Genetic Predisposition to Disease](#)
- [Parkinson disease](#)