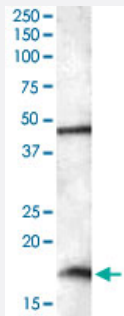


# RBM3 polyclonal antibody

Catalog # PAB15658      Size 100 ug

## Applications



### Western Blot (Cell lysate)

RBM3 polyclonal antibody (Cat # PAB15658) (0.01 ug/mL) staining of HepG2 lysate (35 ug protein in RIPA buffer). Primary incubation was 1 hour. Detected by chemiluminescence.

## Specification

<b>Product Description</b>	Goat polyclonal antibody raised against synthetic peptide of RBM3.
<b>Immunogen</b>	A synthetic peptide corresponding to human RBM3.
<b>Sequence</b>	C-DRYSGGNYRDNYDN
<b>Host</b>	Goat
<b>Theoretical MW (kDa)</b>	17.2
<b>Reactivity</b>	Human
<b>Specificity</b>	Approximately 17 KDa band observed in lysates of cell line HepG2 (calculated MW of 17.2 KDa according to NP_006734.1). An additional band of unknown identity was also consistently observed at 48 KDa. This band was successfully blocked by incubation with the immunizing peptide.
<b>Form</b>	Liquid
<b>Purification</b>	Antigen affinity purification
<b>Concentration</b>	0.5 mg/mL

<b>Recommend Usage</b>	ELISA (1:2000) Western Blot (0.01-0.03 ug/mL) The optimal working dilution should be determined by the end user.
<b>Storage Buffer</b>	In Tris saline, pH 7.3 (0.5% BSA, 0.02% sodium azide)
<b>Storage Instruction</b>	Store at -20°C. Aliquot to avoid repeated freezing and thawing.
<b>Note</b>	This product contains sodium azide: a POISONOUS AND HAZARDOUS SUBSTANCE which should be handled by trained staff only.

## Applications

- Western Blot (Cell lysate)

RBM3 polyclonal antibody (Cat # PAB15658) (0.01 ug/mL) staining of HepG2 lysate (35 ug protein in RIPA buffer). Primary incubation was 1 hour. Detected by chemiluminescence.

- Enzyme-linked Immunoabsorbent Assay

## Gene Info — RBM3

<b>Entrez GeneID</b>	<a href="#">5935</a>
<b>Protein Accession#</b>	<a href="#">NP_006734.1</a>
<b>Gene Name</b>	RBM3
<b>Gene Alias</b>	IS1-RNPL, RNPL
<b>Gene Description</b>	RNA binding motif (RNP1, RRM) protein 3
<b>Omim ID</b>	<a href="#">300027</a>
<b>Gene Ontology</b>	<a href="#">Hyperlink</a>
<b>Gene Summary</b>	This gene is a member of the glycine-rich RNA-binding protein family and encodes a protein with one RNA recognition motif (RRM) domain. Expression of this gene is induced by cold shock and low oxygen tension. A pseudogene exists on chromosome 1. Multiple alternatively spliced transcript variants that are predicted to encode different isoforms have been characterized although some of these variants fit nonsense-mediated decay (NMD) criteria. [provided by RefSeq]
<b>Other Designations</b>	OTTHUMP00000025800 OTTHUMP00000025802 RNA binding motif protein 3

## Publication Reference

- [Translation regulatory factor RBM3 is a proto-oncogene that prevents mitotic catastrophe.](#)

Sureban SM, Ramalingam S, Natarajan G, May R, Subramaniam D, Bishnupuri KS, Morrison AR, Dieckgraefe BK, Brackett DJ, Postier RG, Houchen CW, Anant S.

Oncogene 2008 Jul; 27(33):4544.

Application: IHC, WB-Ti, WB-Tr, Human, Human Breast, colon, lung, ovary, pancreas, prostate cancer, HCT-116 cells