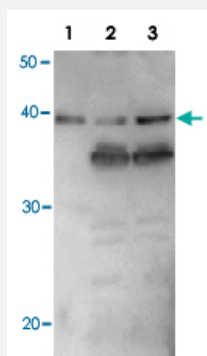


Escherichia coli RuvB polyclonal antibody

Catalog # PAB15570 Size 100 uL

Applications



Western Blot (Recombinant protein)

Detection of RuvB (37kD) protein by Western blotting using this antibody.

Lane1 : RuvB protein 5 ng.

Lane2 : E. coli AB1157 crude extract.

Lane3 : E. coli AB1157 LexA mutant crude extract.

Expression of RuvB is enhanced by LexA mutation.

Specification

Product Description	Rabbit polyclonal antibody raised against full length recombinant <i>Escherichia coli</i> RuvB.
Immunogen	Recombinant protein corresponding to full length <i>Escherichia coli</i> RuvB.
Host	Rabbit
Reactivity	Escherichia coli
Form	Liquid
Recommend Usage	Western Blot (1:3000) The optimal working dilution should be determined by the end user.
Storage Buffer	In antiserum (0.05% sodium azide)
Storage Instruction	Store at 4°C. For long term storage store at -80°C. Aliquot to avoid repeated freezing and thawing.
Note	This product contains sodium azide: a POISONOUS AND HAZARDOUS SUBSTANCE which should be handled by trained staff only.

Applications

- Western Blot (Recombinant protein)

Detection of RuvB (37kD) protein by Western blotting using this antibody.

Lane1 : RuvB protein 5 ng.

Lane2 : E. coli AB1157 crude extract.

Lane3 : E. coli AB1157 LexA mutant crude extract.

Expression of RuvB is enhanced by LexA mutation.

Gene Info — ruvB

Entrez GeneID	946371
Protein Accession#	P0A812
Gene Name	ruvB
Gene Alias	ECK1861, JW1849
Gene Description	ATP-dependent DNA helicase, component of RuvABC resolvosome
Gene Ontology	Hyperlink
Gene Summary	-
Other Designations	-

Publication Reference

- [Processing the holliday junction in homologous recombination.](#)

Shinagawa H, Iwasaki H.

Trends in Biochemical Sciences 1996 Mar; 21(3):107.

- [Escherichia coli RuvA and RuvB proteins specifically interact with Holliday junctions and promote branch migration.](#)

Iwasaki H, Takahagi M, Nakata A, Shinagawa H.

Genes & Development 1992 Nov; 6(11):2214.