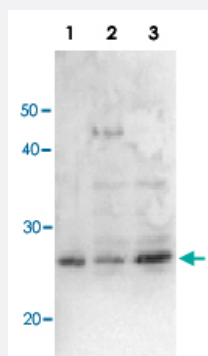


Escherichia coli RuvA polyclonal antibody

Catalog # PAB15569

Size 100 uL

Applications



Western Blot (Recombinant protein)

Detection of RuvA (22kD) protein by Western blotting using this antibody.

Lane1 : RuvA protein 0.8 ng.

Lane2 : E. coli AB1157 crude extract.

Lane3 : E. coli AB1157 LexA mutant crude extract.

Expression of RuvA is enhanced by LexA mutation.

Specification

Product Description	Rabbit polyclonal antibody raised against full length recombinant <i>Escherichia coli</i> RuvA.
Immunogen	Recombinant protein corresponding to full length <i>Escherichia coli</i> RuvA.
Host	Rabbit
Reactivity	Escherichia coli
Form	Liquid
Recommend Usage	Western Blot (1:3000) The optimal working dilution should be determined by the end user.
Storage Buffer	In antiserum (0.05% sodium azide)
Storage Instruction	Store at 4°C. For long term storage store at -80°C. Aliquot to avoid repeated freezing and thawing.
Note	This product contains sodium azide: a POISONOUS AND HAZARDOUS SUBSTANCE which should be handled by trained staff only.

Applications

- Western Blot (Recombinant protein)

Detection of RuvA (22kD) protein by Western blotting using this antibody.

Lane1 : RuvA protein 0.8 ng.

Lane2 : E. coli AB1157 crude extract.

Lane3 : E. coli AB1157 LexA mutant crude extract.

Expression of RuvA is enhanced by LexA mutation.

- Enzyme-linked Immunoabsorbent Assay

Gene Info — ruvA

Entrez GeneID [946369](#)

Protein Accession# [P0A809](#)

Gene Name ruvA

Gene Alias ECK1862, JW1850

Gene Description component of RuvABC resolvosome, regulatory subunit

Gene Ontology [Hyperlink](#)

Gene Summary -

Other Designations -

Publication Reference

- [Processing the holliday junction in homologous recombination.](#)

Shinagawa H, Iwasaki H.

Trends in Biochemical Sciences 1996 Mar; 21(3):107.

- [Escherichia coli RuvA and RuvB proteins specifically interact with Holliday junctions and promote branch migration.](#)

Iwasaki H, Takahagi M, Nakata A, Shinagawa H.

Genes & Development 1992 Nov; 6(11):2214.