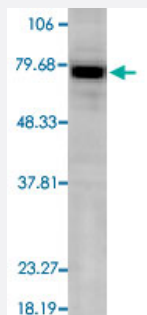


# Hspa5 polyclonal antibody

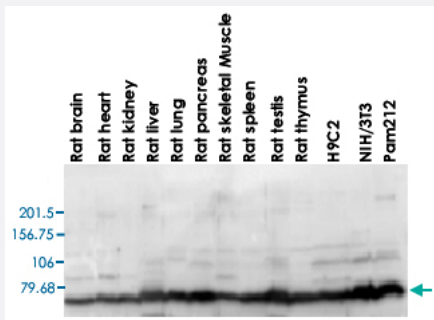
Catalog # PAB15413      Size 200 uL

## Applications



### Western Blot (Tissue lysate)

Western blot analysis of rat tissue mixed lysate with Hspa5 polyclonal antibody (Cat # PAB15413).



### Western Blot (Tissue lysate)

Western blot analysis from rat tissues lysates with Hspa5 polyclonal antibody (Cat # PAB15413).

## Specification

<b>Product Description</b>	Rabbit polyclonal antibody raised against synthetic peptide of Hspa5.
<b>Immunogen</b>	A synthetic peptide (conjugated with KLH) corresponding to rat Hspa5.
<b>Host</b>	Rabbit
<b>Reactivity</b>	Bovine, Frog, Fungi, Hamster, Human, Monkey, Mouse, Rabbit, Rat
<b>Specificity</b>	Detects a protein with a mass of ~78KDa corresponding to Grp78.
<b>Form</b>	Liquid

<b>Recommend Usage</b>	Western Blot (1:2000) The optimal working dilution should be determined by the end user.
------------------------	---

<b>Storage Buffer</b>	In antiserum
-----------------------	--------------

<b>Storage Instruction</b>	Store at -20°C. Aliquot to avoid repeated freezing and thawing.
----------------------------	--

## Applications

- Western Blot (Tissue lysate)

Western blot analysis of rat tissue mixed lysate with Hspa5 polyclonal antibody (Cat # PAB15413).

- Western Blot (Tissue lysate)

Western blot analysis from rat tissues lysates with Hspa5 polyclonal antibody (Cat # PAB15413).

## Gene Info — Hspa5

<b>Entrez GeneID</b>	<a href="#">25617</a>
----------------------	-----------------------

<b>Gene Name</b>	Hspa5
------------------	-------

<b>Gene Alias</b>	BIP
-------------------	-----

<b>Gene Description</b>	heat shock protein 5
-------------------------	----------------------

<b>Gene Ontology</b>	<a href="#">Hyperlink</a>
----------------------	---------------------------

<b>Other Designations</b>	heat shock 70kD protein 5 heat shock 70kDa protein 5 (glucose-regulated protein)
---------------------------	--

## Publication Reference

- [BiP internal ribosomal entry site activity is controlled by heat-induced interaction of NSAP1.](#)

Cho S, Park SM, Kim TD, Kim JH, Kim KT, Jang SK.

Molecular and Cellular Biology 2007 Jan; 27(1):368.

- [Glucose-related protein \(GRP78\) and its relationship to the drug-resistance proteins P170, GST-pi, LRP56 and angiogenesis in non-small cell lung carcinomas.](#)

Koomagi R, Mattern J, Volm M.

Anticancer Res 1999 Sep; 19(5B):4333.

- [The chaperone BiP/GRP78 binds to amyloid precursor protein and decreases Abeta40 and Abeta42 secretion.](#)

Yang Y, Turner RS, Gaut JR.

The Journal of Biological Chemistry 1998 Oct; 273(40):25552.

Application: IP, WB-Tr, Human, HEK 293 cells