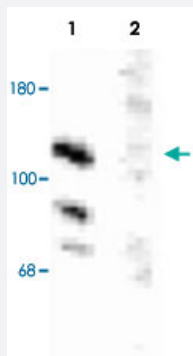


# Kv2.2 polyclonal antibody

Catalog # PAB14532      Size 100 uL

## Applications



### Western Blot (Tissue lysate)

Western blot of rat brain homogenate showing specific immunolabeling of the ~125k voltage-gated potassium channel, Kv2.2 (Lane 1, control). The immunolabeling is blocked by preadsorption with the peptide used as antigen (Lane 2, peptide block).

## Specification

<b>Product Description</b>	Rabbit polyclonal antibody raised against synthetic peptide of Kv2.2.
<b>Immunogen</b>	A synthetic peptide (conjugated with KLH) corresponding to rat and xenopus Kv2.2.
<b>Host</b>	Rabbit
<b>Theoretical MW (kDa)</b>	100
<b>Reactivity</b>	Frog, Rat
<b>Form</b>	Liquid
<b>Purification</b>	Affinity purification
<b>Recommend Usage</b>	Western Blot (1:1000) Immunohistochemistry (Frozen sections) (1:1000) The optimal working dilution should be determined by the end user.
<b>Storage Buffer</b>	In 10 mM HEPES, 150 mM NaCl, pH 7.5 (50% glycerol, 10% BSA)
<b>Storage Instruction</b>	Store at -20°C. Aliquot to avoid repeated freezing and thawing.

## Applications

- Western Blot (Tissue lysate)

Western blot of rat brain homogenate showing specific immunolabeling of the ~125k voltage-gated potassium channel, Kv2.2 (Lane 1, control). The immunolabeling is blocked by preadsorption with the peptide used as antigen (Lane 2, peptide block).

- Immunohistochemistry (Frozen sections)

## Gene Info — Amh

Entrez GeneID	<a href="#">11705</a>
---------------	-----------------------

Protein Accession#	<a href="#">Q63099</a>
--------------------	------------------------

Gene Name	Amh
-----------	-----

Gene Alias	MIS
------------	-----

Gene Description	anti-Mullerian hormone
------------------	------------------------

Gene Ontology	<a href="#">Hyperlink</a>
---------------	---------------------------

Other Designations	Mullerian inhibiting substance anti-Muellerian hormone
--------------------	--