

Agrp polyclonal antibody

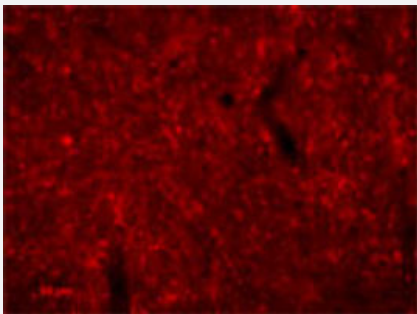
Catalog # PAB14305 Size 50 uL

Applications



Immunohistochemistry (Frozen sections)

The cryostat section of the sheep hypothalamus was incubated in Agrp polyclonal antibody (Cat # PAB14305) at the dilution of 1 : 1000 overnight followed by incubation with biotinylated secondary antibodies. Cell bodies and nerve terminals in the sheep brain are intensely stained. This figure shows staining of cells when no pre-absorption is performed.



Immunofluorescence

Immunohistochemical detection of Agrp in the arcuate nucleus of rat brain using Agrp polyclonal antibody (Cat # PAB14305) incubated at the dilution of 1 : 1000 ~ 2000 in PBS overnight followed by incubation with Alexa-568 goat anti-guinea pig (1 : 500) secondary antibody.

Specification

Product Description	Guinea pig polyclonal antibody raised against synthetic peptide of Agrp.
Immunogen	A synthetic peptide (conjugated with carrier protein) corresponding to amino acids 82-131 of mouse Agrp.
Sequence	SPRRCVRLHESCLGQQVPCCDPCATCYCRFFNAFCYCRKLGATNLCSRT
Host	Guinea pig
Reactivity	Mouse, Sheep
Form	Lyophilized

Recommend Usage	Immunohistochemistry (1:2000) The optimal working dilution should be determined by the end user.
Storage Buffer	Lyophilized from PBS
Storage Instruction	Store at 4°C on dry atmosphere. After reconstitution with deionized water, store at -20°C or lower. Aliquot to avoid repeated freezing and thawing.

Applications

- Immunohistochemistry (Frozen sections)

The cryostat section of the sheep hypothalamus was incubated in Agrp polyclonal antibody (Cat # PAB14305) at the dilution of 1 : 1000 overnight followed by incubation with biotinylated secondary antibodies. Cell bodies and nerve terminals in the sheep brain are intensely stained. This figure shows staining of cells when no pre-absorption is performed.

- Immunofluorescence

Immunohistochemical detection of Agrp in the arcuate nucleus of rat brain using Agrp polyclonal antibody (Cat # PAB14305) incubated at the dilution of 1 : 1000 ~ 2000 in PBS overnight followed by incubation with Alexa-568 goat anti-guinea pig (1 : 500) secondary antibody.

Gene Info — Agrp

Entrez GeneID	11604
Protein Accession#	P56473
Gene Name	Agrp
Gene Alias	Agrt, Art
Gene Description	agouti related protein
Gene Ontology	Hyperlink
Other Designations	orexigenic neuropeptide

Publication Reference

- [Prenatal development of hypothalamic neuropeptide systems in the nonhuman primate.](#)

Grayson BE, Allen SE, Billes SK, Williams SM, Smith MS, Grove KL.

Neuroscience 2006 Dec; 143(4):975.

Application: IF, IHC-Fr, Monkey, Monkey coronal hypothalamic sections