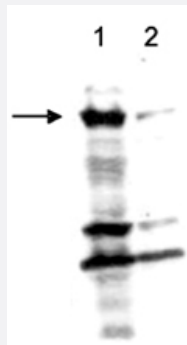


AOF2 polyclonal antibody

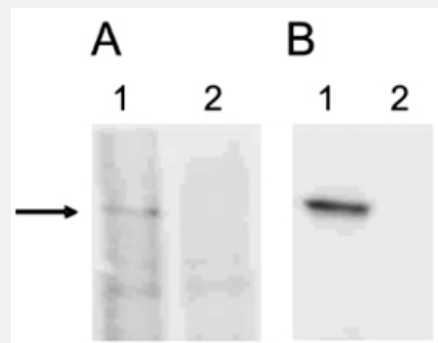
Catalog # PAB14134 Size 50 ug

Applications



Western Blot (Cell lysate)

Western blot was performed using respectively 150 ug (Lane 1) or 50 ug (Lane 2) nuclear extracts from HeLa cells and AOF2 polyclonal antibody (Cat # PAB14134) diluted 1 : 1,000.

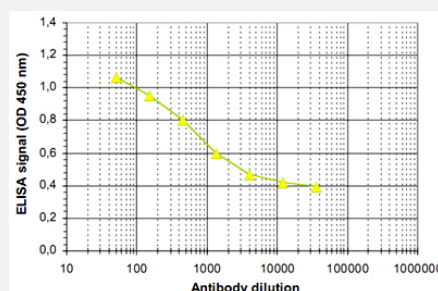


Western Blot (Transfected lysate)

293T cells were transiently transfected with an expression vector for HA-tagged AOF2 (Lanes 1) or with an empty vector (Lanes 2).

A : Whole cell extracts were analysed by Western blot using AOF2 polyclonal antibody (Cat # PAB14134), diluted 1 : 1,000.

B. Whole cell extracts were immunoprecipitated with 2 ug of AOF2 polyclonal antibody (Cat # PAB14134). Immunoprecipitates were analysed by Western blot as described above.



Enzyme-linked Immunoabsorbent Assay

ELISA was performed using a serial dilution of AOF2 polyclonal antibody (Cat # PAB14134).

The plates were coated with the peptide used for immunization of the rabbit. By plotting the absorbance against the antibody dilution, the titer of the purified antibody was estimated to be 1 : 2,500.

Specification

Product Description

Rabbit polyclonal antibody raised against synthetic peptide of AOF2.

Immunogen	A synthetic peptide (conjugated with KLH) corresponding to N-terminus of human AOF2.
Host	Rabbit
Reactivity	Human
Form	Liquid
Recommend Usage	ELISA (1:100) Western Blot (1:1000) Immunoprecipitation (2 ug/IP) The optimal working dilution should be determined by the end user.
Storage Buffer	In PBS (0.05% sodium azide, 0.05% proclin 300)
Storage Instruction	Store at -20°C. For long term storage store at -80°C. Aliquot to avoid repeated freezing and thawing.
Note	This product contains sodium azide: a POISONOUS AND HAZARDOUS SUBSTANCE which should be handled by trained staff only.

Applications

- Western Blot (Cell lysate)

Western blot was performed using respectively 150 ug (Lane 1) or 50 ug (Lane 2) nuclear extracts from HeLa cells and AOF2 polyclonal antibody (Cat # PAB14134) diluted 1 : 1,000.

- Western Blot (Transfected lysate)

293T cells were transiently transfected with an expression vector for HA-tagged AOF2 (Lanes 1) or with an empty vector (Lanes 2).

A : Whole cell extracts were analysed by Western blot using AOF2 polyclonal antibody (Cat # PAB14134), diluted 1 : 1,000.

B. Whole cell extracts were immunoprecipitated with 2 ug of AOF2 polyclonal antibody (Cat # PAB14134). Immunoprecipitates were analysed by Western blot as described above.

- Immunoprecipitation

- Enzyme-linked Immunoabsorbent Assay

ELISA was performed using a serial dilution of AOF2 polyclonal antibody (Cat # PAB14134).

The plates were coated with the peptide used for immunization of the rabbit.

By plotting the absorbance against the antibody dilution, the titer of the purified antibody was estimated to be 1 : 2,500.

Gene Info — AOF2

Entrez GeneID

[23028](#)

Protein Accession#	O60341
Gene Name	AOF2
Gene Alias	BHC110, KDM1, KIAA0601, LSD1
Gene Description	amine oxidase (flavin containing) domain 2
Omim ID	609132
Gene Ontology	Hyperlink
Gene Summary	<p>This gene encodes a nuclear protein containing a SWIRM domain, a FAD-binding motif, and an amine oxidase domain. This protein is a component of several histone deacetylase complexes, though it silences genes by functioning as a histone demethylase. Alternative splicing results in multiple transcript variants. [provided by RefSeq]</p>
Other Designations	BRAF35-HDAC complex protein BHC110 FAD-binding protein BRAF35-HDAC complex, 110 kDa subunit lysine (K)-specific demethylase 1 lysine-specific histone demethylase 1