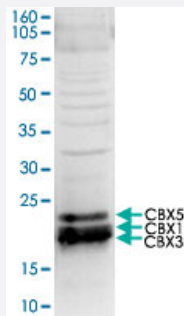


CBX1 polyclonal antibody

Catalog # PAB14123 Size 50 ug

Applications



Western Blot (Cell lysate)

Western blot was performed on nuclear extracts from HeLa cells (HeLa NE, 20 ug) with CBX1 polyclonal antibody (Cat # PAB14123) diluted 1 : 1,000 in TBS-Tween containing 5% skimmed milk.

The expected location of CBX1, CBX3, and CBX5 is indicated on the right. The HP1 antibody is not specific for CBX1, but also recognizes CBX3 and CBX5.

Specification

Product Description	Rabbit polyclonal antibody raised against full length recombinant CBX1.
Immunogen	Recombinant GST fusion protein corresponding to full length human CBX1.
Host	Rabbit
Reactivity	Human
Specificity	This antibody also recognizes CBX5 and CBX3.
Form	Liquid
Recommend Usage	Western Blot (1:1000) The optimal working dilution should be determined by the end user.
Storage Buffer	In PBS (0.05% sodium azide, 0.05% proclin 300)
Storage Instruction	Store at -20°C. For long term storage store at -80°C. Aliquot to avoid repeated freezing and thawing.
Note	This product contains sodium azide: a POISONOUS AND HAZARDOUS SUBSTANCE which should be handled by trained staff only.

Applications

- Western Blot (Cell lysate)

Western blot was performed on nuclear extracts from HeLa cells (HeLa NE, 20 ug) with CBX1 polyclonal antibody (Cat # PAB14123) diluted 1 : 1,000 in TBS-Tween containing 5% skimmed milk.

The expected location of CBX1, CBX3, and CBX5 is indicated on the right.

The HP1 antibody is not specific for CBX1, but also recognizes CBX3 and CBX5.

Gene Info — CBX1

Entrez GeneID [10951](#)

Protein Accession# [P83916](#)

Gene Name CBX1

Gene Alias CBX, HP1-BETA, HP1Hs-beta, HP1Hsbeta, M31, MOD1, p25beta

Gene Description chromobox homolog 1 (HP1 beta homolog Drosophila)

Omim ID [604511](#)

Gene Ontology [Hyperlink](#)

Gene Summary This gene encodes a highly conserved nonhistone protein, which is a member of the heterochromatin protein family . The protein is enriched in the heterochromatin and associated with centromeres. The protein has a single N-terminal chromodomain which can bind to histone proteins via methylated lysine residues, and a C-terminal chromo shadow-domain (CSD) which is responsible for the homodimerization and interaction with a number of chromatin-associated nonhistone proteins. The protein may play an important role in the epigenetic control of chromatin structure and gene expression. Several related pseudogenes are located on chromosomes 1, 3, and X. Multiple alternatively spliced variants, encoding the same protein, have been identified. [provided by RefSeq]

Other Designations heterochromatin protein 1-beta|heterochromatin protein p25 beta|modifier 1 protein