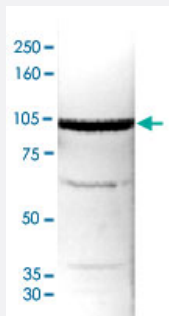


AOF2 polyclonal antibody

Catalog # PAB14121

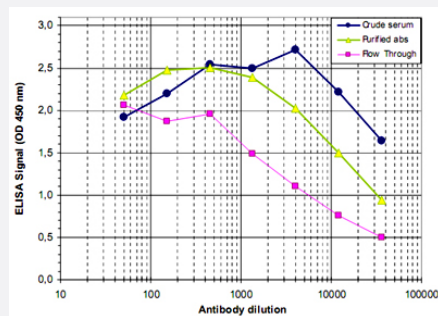
Size 50 ug

Applications



Western Blot (Cell lysate)

Western blot was performed using nuclear extracts from HeLa cells (HeLa NE, 40 ug) and AOF2 polyclonal antibody (Cat # PAB14121) diluted 1 : 1,000 in TBS-Tween containing 5% skimmed milk.



Enzyme-linked Immunoabsorbent Assay

ELISA was performed using a serial dilution of AOF2 polyclonal antibody (Cat # PAB14121), crude serum and Flow Through in antigen coated wells. By plotting the absorbance against the antibody dilution, the titer of the purified antibody was estimated to be 1 : 20,000.

Specification

| | |
|---------------------|---|
| Product Description | Rabbit polyclonal antibody raised against synthetic peptide of AOF2. |
| Immunogen | A synthetic peptide (conjugated with KLH) corresponding to human AOF2. |
| Host | Rabbit |
| Reactivity | Human |
| Form | Liquid |
| Recommend Usage | ELISA (1:200-1:1000) Western Blot (1:1000) The optimal working dilution should be determined by the end user. |

| | |
|----------------------------|--|
| Storage Buffer | In PBS (0.05% sodium azide, 0.05% proclin 300) |
| Storage Instruction | Store at -20°C. For long term storage store at -80°C. Aliquot to avoid repeated freezing and thawing. |
| Note | This product contains sodium azide: a POISONOUS AND HAZARDOUS SUBSTANCE which should be handled by trained staff only. |

Applications

- Western Blot (Cell lysate)

Western blot was performed using nuclear extracts from HeLa cells (HeLa NE, 40 ug) and AOF2 polyclonal antibody (Cat # PAB14121) diluted 1 : 1,000 in TBS-Tween containing 5% skimmed milk.

- Enzyme-linked Immunoabsorbent Assay

ELISA was performed using a serial dilution of AOF2 polyclonal antibody (Cat # PAB14121), crude serum and Flow Through in antigen coated wells.

By plotting the absorbance against the antibody dilution, the titer of the purified antibody was estimated to be 1 : 20,000.

Gene Info — AOF2

| | |
|---------------------------|---|
| Entrez GeneID | 23028 |
| Protein Accession# | O60341 |
| Gene Name | AOF2 |
| Gene Alias | BHC110, KDM1, KIAA0601, LSD1 |
| Gene Description | amine oxidase (flavin containing) domain 2 |
| Omim ID | 609132 |
| Gene Ontology | Hyperlink |
| Gene Summary | This gene encodes a nuclear protein containing a SWIRM domain, a FAD-binding motif, and an amine oxidase domain. This protein is a component of several histone deacetylase complexes, though it silences genes by functioning as a histone demethylase. Alternative splicing results in multiple transcript variants. [provided by RefSeq] |
| Other Designations | BRAF35-HDAC complex protein BHC110 FAD-binding protein BRAF35-HDAC complex, 110 kDa subunit lysine (K)-specific demethylase 1 lysine-specific histone demethylase 1 |