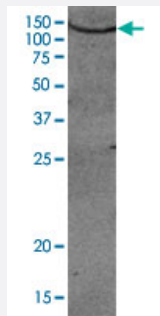


# AOF2 polyclonal antibody

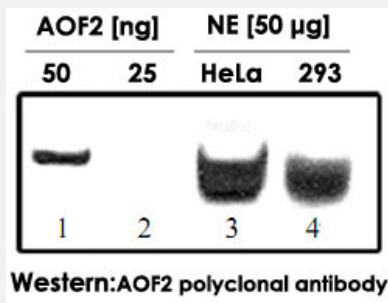
Catalog # PAB14107      Size 50 ug

## Applications



### Western Blot (Cell lysate)

Western blot was performed using AOF2 polyclonal antibody (Cat # PAB14107) diluted 1 : 1,000 in TBS-Tween containing 5% skimmed milk. The antibody recognizes endogenous AOF2 in HeLa NE (20 ug).



### Western Blot

Western blot was performed using AOF2 polyclonal antibody (Cat # PAB14107) diluted 1 : 1,000 in TBS-Tween containing 5% skimmed milk. The antibody recognizes the recombinant AOF2 (50 ng) (Lane 1) as well as endogenous AOF2 in nuclear extracts from HeLa (Lane 3) and HEK293 (Lane 4).

## Specification

Product Description	Rabbit polyclonal antibody raised against full length recombinant AOF2.
Immunogen	Recombinant protein corresponding to full length human AOF2.
Host	Rabbit
Reactivity	Human
Form	Liquid
Recommend Usage	Western Blot (1:1000) ChIP (3 ug) The optimal working dilution should be determined by the end user.

<b>Storage Buffer</b>	In PBS (0.05% sodium azide, 0.05% proclin 300)
<b>Storage Instruction</b>	Store at -20°C. For long term storage store at -80°C. Aliquot to avoid repeated freezing and thawing.
<b>Note</b>	This product contains sodium azide: a POISONOUS AND HAZARDOUS SUBSTANCE which should be handled by trained staff only.

## Applications

- ChIP

- Western Blot (Cell lysate)

Western blot was performed using AOF2 polyclonal antibody (Cat # PAB14107) diluted 1 : 1,000 in TBS-Tween containing 5% skimmed milk.

The antibody recognizes endogenous AOF2 in HeLa NE (20 ug).

- Western Blot

Western blot was performed using AOF2 polyclonal antibody (Cat # PAB14107) diluted 1 : 1,000 in TBS-Tween containing 5% skimmed milk. The antibody recognizes the recombinant AOF2 (50 ng) (Lane 1) as well as endogenous AOF2 in nuclear extracts from HeLa (Lane 3) and HEK293 (Lane 4).

## Gene Info — AOF2

<b>Entrez GeneID</b>	<a href="#">23028</a>
<b>Protein Accession#</b>	<a href="#">O60341</a>
<b>Gene Name</b>	AOF2
<b>Gene Alias</b>	BHC110, KDM1, KIAA0601, LSD1
<b>Gene Description</b>	amine oxidase (flavin containing) domain 2
<b>Omim ID</b>	<a href="#">609132</a>
<b>Gene Ontology</b>	<a href="#">Hyperlink</a>
<b>Gene Summary</b>	This gene encodes a nuclear protein containing a SWIRM domain, a FAD-binding motif, and an amine oxidase domain. This protein is a component of several histone deacetylase complexes, though it silences genes by functioning as a histone demethylase. Alternative splicing results in multiple transcript variants. [provided by RefSeq]
<b>Other Designations</b>	BRAF35-HDAC complex protein BHC110 FAD-binding protein BRAF35-HDAC complex, 110 kDa subunit lysine (K)-specific demethylase 1 lysine-specific histone demethylase 1

## Publication Reference

- [NF-Y substitutes H2A-H2B on active cell-cycle promoters: recruitment of CoREST-KDM1 and fine-tuning of H3 methylations.](#)

Gatta R, Mantovani R.

Nucleic Acids Research 2008 Nov; 36(20):6592.

Application: ChIP, Human, HCT-116 cells