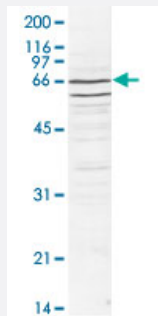


CDC73 polyclonal antibody

Catalog # PAB14104

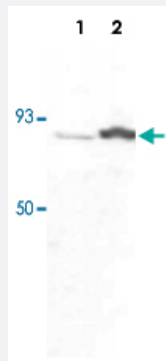
Size 50 ug

Applications



Western Blot (Cell lysate)

Western blot was performed using nuclear extracts from HeLa cells (HeLa NE, 20 ug) and the CDC73 polyclonal antibody (Cat # PAB14104) at dilution 1 : 1,000 in TBS-Tween + 5% skimmed milk.



Western Blot (Cell lysate)

Western blot was performed using whole cell extracts (WCE) from drosophila larva (Lane 1) and drosophila adults (Lane 2) and the CDC73 polyclonal antibody (Cat # PAB14104) at dilution 1 : 1,000 in TBS-Tween + 5% skimmed milk.

Specification

Product Description	Rabbit polyclonal antibody raised against full length recombinant CDC73.
Immunogen	Recombinant protein corresponding to full length drosophila CDC73.
Host	Rabbit
Reactivity	Flies, Fruit fly, Human
Form	Liquid
Recommend Usage	Western Blot (1:1000) The optimal working dilution should be determined by the end user.

Storage Buffer	In PBS (0.05% sodium azide, 0.05% proclin 300)
Storage Instruction	Store at -20°C. For long term storage store at -80°C. Aliquot to avoid repeated freezing and thawing.
Note	This product contains sodium azide: a POISONOUS AND HAZARDOUS SUBSTANCE which should be handled by trained staff only.

Applications

- ChIP

- Western Blot (Cell lysate)

Western blot was performed using nuclear extracts from HeLa cells (HeLa NE, 20 ug) and the CDC73 polyclonal antibody (Cat # PAB14104) at dilution 1 : 1,000 in TBS-Tween + 5% skimmed milk.

- Western Blot (Cell lysate)

Western blot was performed using whole cell extracts (WCE) from drosophila larva (Lane 1) and drosophila adults (Lane 2) and the CDC73 polyclonal antibody (Cat # PAB14104) at dilution 1 : 1,000 in TBS-Tween + 5% skimmed milk.

Gene Info — CDC73

Entrez GeneID	79577
Protein Accession#	Q6P1J9 (human)
Gene Name	CDC73
Gene Alias	C1orf28, FLJ23316, HPT-JT, HRPT2
Gene Description	cell division cycle 73, Paf1/RNA polymerase II complex component, homolog (S. cerevisiae)
Omim ID	145000 145001 607393 608266
Gene Ontology	Hyperlink
Gene Summary	This gene encodes a tumor suppressor that is involved in transcriptional and post-transcriptional control pathways. The protein is a component of the the PAF protein complex, which associates with the RNA polymerase II subunit POLR2A and with a histone methyltransferase complex. This protein appears to facilitate the association of 3' mRNA processing factors with actively-transcribed chromatin. Mutations in this gene have been linked to hyperparathyroidism-jaw tumor syndrome, familial isolated hyperparathyroidism, and parathyroid carcinoma. [provided by RefSeq]
Other Designations	hyperparathyroidism 2 (with jaw tumor) parafibromin

Publication Reference

- [Drosophila Paf1 modulates chromatin structure at actively transcribed genes.](#)

Adelman K, Wei W, Ardehali MB, Werner J, Zhu B, Reinberg D, Lis JT.

Molecular and Cellular Biology 2006 Jan; 26(1):250.

Application: ChIP, WB, Drosophila, Third-instar larvae

- [The human PAF complex coordinates transcription with events downstream of RNA synthesis.](#)

Zhu B, Mandal SS, Pham AD, Zheng Y, Erdjument-Bromage H, Batra SK, Tempst P, Reinberg D.

Genes & Development 2005 Jul; 19(14):1668.

- [Molecular evidence indicating that the yeast PAF complex is required for transcription elongation.](#)

Rondon AG, Gallardo M, Garcia-Rubio M, Aguilera A.

EMBO Reports 2004 Jan; 5(1):47.

Disease

- [Genetic Predisposition to Disease](#)
- [Hyperparathyroidism](#)
- [Multiple endocrine neoplasia](#)
- [Pancreatic cancer](#)
- [Pancreatic Neoplasms](#)
- [Parathyroid Neoplasms](#)