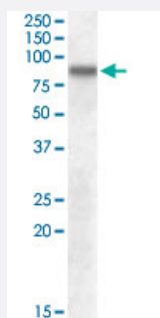


SCARB2 polyclonal antibody

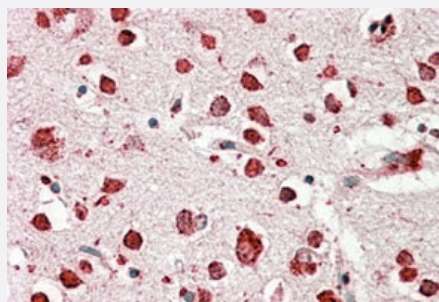
Catalog # PAB13673 Size 100 ug

Applications



Western Blot (Tissue lysate)

SCARB2 polyclonal antibody (Cat # PAB13673) (0.1 ug/mL) staining of human cerebral cortex lysate (35 ug protein in RIPA buffer). Primary incubation was 1 hour. Detected by chemiluminescence.



Immunohistochemistry (Formalin/PFA-fixed paraffin-embedded sections)

SCARB2 polyclonal antibody (Cat # PAB13673) (3.8 ug/mL) staining of paraffin embedded human cerebral cortex. Steamed antigen retrieval with citrate buffer pH 6, AP-staining.

Specification

Product Description	Goat polyclonal antibody raised against synthetic peptide of SCARB2.
Immunogen	A synthetic peptide corresponding to amino acids at internal region of human SCARB2.
Sequence	C-NKANIQFGDNGTTIS
Host	Goat
Theoretical MW (kDa)	54.3
Reactivity	Human
Form	Liquid

Purification	Antigen affinity purification
Concentration	0.5 mg/mL
Recommend Usage	ELISA (1:4000) Western Blot (0.1-0.3 ug/mL) The optimal working dilution should be determined by the end user.
Storage Buffer	In 0.5 mg/mL Tris saline, pH 7.3 (0.02% sodium azide, 0.5% BSA)
Storage Instruction	Store at -20°C. Aliquot to avoid repeated freezing and thawing.
Note	This product contains sodium azide: a POISONOUS AND HAZARDOUS SUBSTANCE which should be handled by trained staff only.

Applications

- Western Blot (Tissue lysate)

SCARB2 polyclonal antibody (Cat # PAB13673) (0.1 ug/mL) staining of human cerebral cortex lysate (35 ug protein in RIPA buffer). Primary incubation was 1 hour. Detected by chemiluminescence.

- Immunohistochemistry (Formalin/PFA-fixed paraffin-embedded sections)

SCARB2 polyclonal antibody (Cat # PAB13673) (3.8 ug/mL) staining of paraffin embedded human cerebral cortex. Steamed antigen retrieval with citrate buffer pH 6, AP-staining.

- Enzyme-linked Immunoabsorbent Assay

Gene Info — SCARB2

Entrez GeneID	950
Protein Accession#	NP_005497.1
Gene Name	SCARB2
Gene Alias	AMRF, CD36L2, HLGP85, LIMPII, SR-BII
Gene Description	scavenger receptor class B, member 2
Omim ID	602257
Gene Ontology	Hyperlink

Gene Summary

The protein encoded by this gene is a type III glycoprotein that is located primarily in limiting membranes of lysosomes and endosomes. Studies of the similar protein in mice and rat suggested that this protein may participate in membrane transportation and the reorganization of endosomal/lysosomal compartment. Deficiency of the similar protein in mice was reported to impair cell membrane transport processes and cause pelvic junction obstruction, deafness, and peripheral neuropathy. [provided by RefSeq]

Other Designations

85 kDa lysosomal sialoglycoprotein scavenger receptor class B, member 2|CD36 antigen (collagen type I receptor, thrombospondin receptor)-like 2 (lysosomal integral membrane protein II)|lysosomal integral membrane protein II

Publication Reference

- [Establishment of cell lines with increased susceptibility to EV71/CA16 by stable overexpression of SCARB2.](#)

Li X, Fan P, Jin J, Su W, An D, Xu L, Sun S, Zhang Y, Meng X, Gao F, Kong W, Jiang C.

Virology Journal 2013 Aug; 10:250.

Application: Flow Cyt, WB-Tr, Human, Monkey, HEK 293, RD, Vero cells

- [Array-based gene discovery with three unrelated subjects shows SCARB2/LIMP-2 deficiency causes myoclonus epilepsy and glomerulosclerosis.](#)

Berkovic SF, Dibbens LM, Oshlack A, Silver JD, Katerelos M, Vears DF, Lullmann-Rauch R, Blanz J, Zhang KW, Stankovich J, Kalnins RM, Dowling JP, Andermann E, Andermann F, Faldini E.

American Journal of Human Genetics 2008 Feb; 82(3):673.

Pathway

- [Lysosome](#)

Disease

- [Cardiovascular Diseases](#)
- [Diabetes Mellitus](#)
- [Drug Toxicity](#)
- [Edema](#)
- [Hypercholesterolemia](#)