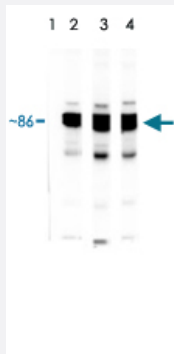


HSP90 polyclonal antibody

Catalog # PAB13577 Size 100 uL

Applications



Western Blot (Recombinant protein)

Lane 1 : HSP90 protein standard stressgen.

Lane 2 : Control (13°C) rainbow trout nuclear fraction.

Lane 3 : Heat shocked (25 °C) rainbow trout nuclear fraction.

Lane 4 : 24 hours post heat shock (13°C) rainbow trout nuclear fraction.

There will be some background bands in LMW range.

Specification

Product Description	Rabbit polyclonal antibody raised against synthetic peptide of HSP90.
Immunogen	A synthetic peptide (conjugated with KLH) corresponding to Hsp90.
Host	Rabbit
Reactivity	Fish, Human, Rainbow trout
Form	Lyophilized
Recommend Usage	Western Blot (1:5000) The optimal working dilution should be determined by the end user.
Storage Buffer	Lyophilized from serum
Storage Instruction	Store at -20°C on dry atmosphere. After reconstitution with 100 uL deionized water, store at -20°C or lower. Aliquot to avoid repeated freezing and thawing.

Applications

- Western Blot (Recombinant protein)

Lane 1 : HSP90 protein standard stressgen.

Lane 2 : Control (13°C) rainbow trout nuclear fraction.

Lane 3 : Heat shocked (25 °C) rainbow trout nuclear fraction.

Lane 4 : 24 hours post heat shock (13°C) rainbow trout nuclear fraction.

There will be some background bands in LMW range.

Publication Reference

- [The role of hsp90 in 17alpha-ethynylestradiol-induced endocrine disruption in rainbow trout hepatocytes.](#)

Osborne N, Sherry J, Rendell JL, Currie S.

Ecotoxicology and Environmental Safety 2007 Sep; 68(1):13.

Application: IF, WB, Fish, Rainbow trout hepatocytes

- [Development-dependent differences in intracellular localization of stress proteins \(hsps\) in rainbow trout, *Oncorhynchus mykiss*, following heat shock.](#)

Jillian L. Rendell, Stephanie Fowler, Amanda Cockshutt and Suzanne Currie

Comparative Biochemistry and Physiology. Part D, Genomics & Proteomics 2006 Jun; 1(2):238.

Application: IF, WB, FISH, FISH cardiomyocytes, hepatocytes, liver