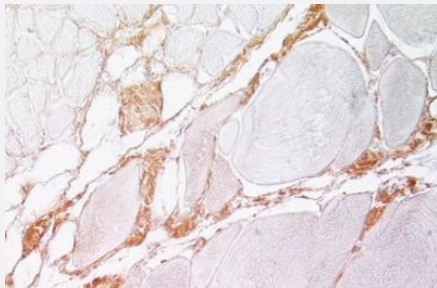


Collagen Type I polyclonal antibody

Catalog # PAB13490

Size 100 uL

Applications



Immunohistochemistry (Formalin/PFA-fixed paraffin-embedded sections)

Immunohistochemical staining (Formalin-fixed paraffin-embedded sections) of salmon muscle. DAB, hematoxylin.

Specification

Product Description	Rabbit polyclonal antibody raised against native Collagen Type I.
Immunogen	Native purified Collagen Type I from fish skin.
Host	Rabbit
Reactivity	Fish
Specificity	This antibody reacts with salmon (Salmon salar) collagen type I, crossreactivity with sole and tunafish collagen I <0.4, goldfish collagen I <0.2, mammalian and avian collagen type I <0.2 (OD ELISA at 1:100 dilution).
Form	Lyophilized
Recommend Usage	ELISA (1:200) Immunofluorescence (1:40) Immunohistochemistry (Formalin/PFA-fixed paraffin-embedded sections) (1:500) The optimal working dilution should be determined by the end user.
Storage Buffer	Lyophilized from PBS.

Storage Instruction

Store lyophilized product at 4°C or -20°C on dry atmosphere.
After reconstitution with deionized water, store at -20°C or lower.
Aliquot to avoid repeated freezing and thawing.

Applications

- Immunohistochemistry (Formalin/PFA-fixed paraffin-embedded sections)

Immunohistochemical staining (Formalin-fixed paraffin-embedded sections) of salmon muscle. DAB, hematoxylin.

- Immunofluorescence
- Enzyme-linked Immunoabsorbent Assay
- Radioimmunoassay