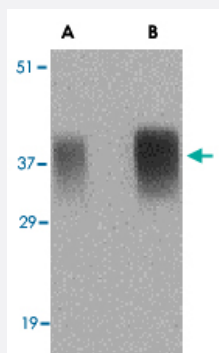


APH1A polyclonal antibody

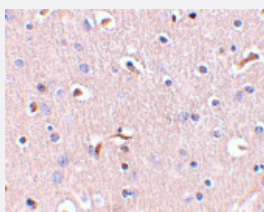
Catalog # PAB13238 Size 100 ug

Applications



Western Blot (Tissue lysate)

Western blot analysis of APH1A in human brain tissue lysate with APH1A polyclonal antibody (Cat # PAB13238) at (A) 0.5 and (B) 1 ug/mL .



Immunohistochemistry (Formalin/PFA-fixed paraffin-embedded sections)

Immunohistochemistry of APH1A in human brain tissue with APH1A polyclonal antibody (Cat # PAB13238) at 5 ug/mL .

Specification

Product Description	Rabbit polyclonal antibody raised against synthetic peptide of APH1A.
Immunogen	A synthetic peptide corresponding to internal region 18 amino acids of human APH1A.
Host	Rabbit
Reactivity	Human, Mouse, Rat
Form	Liquid
Recommend Usage	Western Blot (0.5-1 ug/mL) The optimal working dilution should be determined by the end user.

Storage Buffer	In PBS (0.02% sodium azide)
Storage Instruction	Store at 4°C for three months. For long term storage store at -20°C. Aliquot to avoid repeated freezing and thawing.
Note	This product contains sodium azide: a POISONOUS AND HAZARDOUS SUBSTANCE which should be handled by trained staff only.

Applications

- Western Blot (Tissue lysate)

Western blot analysis of APH1A in human brain tissue lysate with APH1A polyclonal antibody (Cat # PAB13238) at (A) 0.5 and (B) 1 ug/mL .

- Immunohistochemistry (Formalin/PFA-fixed paraffin-embedded sections)

Immunohistochemistry of APH1A in human brain tissue with APH1A polyclonal antibody (Cat # PAB13238) at 5 ug/mL .

Gene Info — APH1A

Entrez GeneID	51107
Protein Accession#	AAH08732
Gene Name	APH1A
Gene Alias	6530402N02Rik, APH-1A, CGI-78
Gene Description	anterior pharynx defective 1 homolog A (C. elegans)
Omim ID	607629
Gene Ontology	Hyperlink
Gene Summary	APH1 is a multipass transmembrane protein that interacts with presenilin (see PSEN1; MIM 104311) and nicastrin (APH2; MIM 605254) as a functional component of the gamma-secretase complex. The gamma-secretase complex is required for the intramembrane proteolysis of a number of membrane proteins, including the amyloid-beta precursor protein (APP; MIM 104760) and Notch (MIM 190198).[supplied by OMIM]
Other Designations	OTTHUMP00000014528 OTTHUMP00000014529 anterior pharynx defective 1 homolog A

Publication Reference

- [APH-1a is the principal mammalian APH-1 isoform present in gamma-secretase complexes during embryonic development.](#)

Ma G, Li T, Price DL, Wong PC.

Journal of Neuroscience 2005 Jan; 25(1):192.

Application: WB, Mouse, Mouse fibroblasts

- [Functional reconstitution of gamma-secretase through coordinated expression of presenilin, nicastrin, Aph-1, and Pen-2.](#)

Periz G, Fortini ME.

Journal of Neuroscience Research 2004 Aug; 77(3):309.

- [APH-1 is a multipass membrane protein essential for the Notch signaling pathway in Caenorhabditis elegans embryos.](#)

Goutte C, Tsunozaki M, Hale VA, Priess JR.

PNAS 2002 Jan; 99(2):775.

Application: IEM, C. elegans, C. elegans embryos

Pathway

- [Notch signaling pathway](#)

Disease

- [Alzheimer disease](#)
- [Cardiovascular Diseases](#)
- [Diabetes Complications](#)
- [Genetic Predisposition to Disease](#)
- [Metabolic Syndrome X](#)
- [Neoplasms](#)
- [Osteoporosis](#)
- [Tobacco Use Disorder](#)