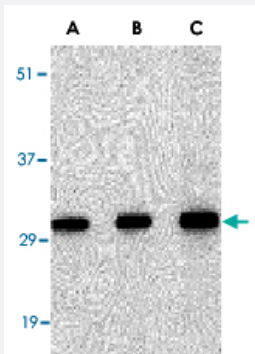


SNAI2 polyclonal antibody

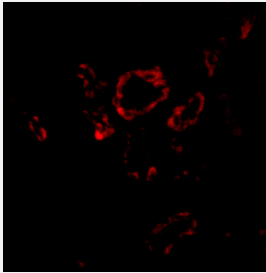
Catalog # PAB13228 Size 100 ug

Applications



Western Blot (Cell lysate)

Western blot analysis of SNAI2 in 293 cell lysate with SNAI2 polyclonal antibody (Cat # PAB13228) at in (A) 0.5, (B) 1 and (C) 2 ug/mL .



Immunofluorescence

Immunofluorescence of SNAI2 in human kidney tissue with SNAI2 polyclonal antibody (Cat # PAB13228) at 20 ug/mL .

Specification

Product Description	Rabbit polyclonal antibody raised against synthetic peptide of SNAI2.
Immunogen	A synthetic peptide corresponding to internal region 13 amino acids of human SNAI2.
Host	Rabbit
Reactivity	Human, Mouse
Form	Liquid
Recommend Usage	Western Blot (1-2 ug/mL) The optimal working dilution should be determined by the end user.

Storage Buffer	In PBS (0.02% sodium azide)
Storage Instruction	Store at 4°C for three months. For long term storage store at -20°C. Aliquot to avoid repeated freezing and thawing.
Note	This product contains sodium azide: a POISONOUS AND HAZARDOUS SUBSTANCE which should be handled by trained staff only.

Applications

- Western Blot (Cell lysate)

Western blot analysis of SNAI2 in 293 cell lysate with SNAI2 polyclonal antibody (Cat # PAB13228) at in (A) 0.5, (B) 1 and (C) 2 ug/mL .

- Immunofluorescence

Immunofluorescence of SNAI2 in human kidney tissue with SNAI2 polyclonal antibody (Cat # PAB13228) at 20 ug/mL .

Gene Info — SNAI2

Entrez GeneID	6591
Protein Accession#	Q43623
Gene Name	SNAI2
Gene Alias	MGC10182, SLUG, SLUGH1, WS2D
Gene Description	snail homolog 2 (Drosophila)
Omim ID	172800 602150 608890
Gene Ontology	Hyperlink
Gene Summary	This gene encodes a member of the Snail family of C2H2-type zinc finger transcription factors. The encoded protein acts as a transcriptional repressor that binds to E-box motifs and is also likely to repress E-cadherin transcription in breast carcinoma. This protein is involved in epithelial-mesenchymal transitions and has antiapoptotic activity. Mutations in this gene may be associated with sporadic cases of neural tube defects. [provided by RefSeq]
Other Designations	OTTHUMP00000195093 neural crest transcription factor SLUG slug (chicken homolog), zinc finger protein slug homolog, zinc finger protein snail 2

Publication Reference

- [Slug expression is an independent prognostic parameter for poor survival in colorectal carcinoma patients.](#)

Shioiri M, Shida T, Koda K, Oda K, Seike K, Nishimura M, Takano S, Miyazaki M.

British Journal of Cancer 2006 Jun; 94(12):1816.

Application: IHC-P, Human, Colorectal carcinoma

- [The transcription factors Slug and Snail act as repressors of Claudin-1 expression in epithelial cells.](#)

Martínez-Estrada OM, Cullerés A, Soriano FX, Peinado H, Bolós V, Martínez FO, Reina M, Cano A, Fabre M, Vilaró S.

The Biochemical Journal 2006 Mar; 394(Pt 2):449.

Application: Func, Dog, MDCK (NBL-2)

- [Control of cell behavior during vertebrate development by Slug, a zinc finger gene.](#)

Nieto MA, Sargent MG, Wilkinson DG, Cooke J.

Science 1994 May; 264(5160):835.

Pathway

- [Adherens junction](#)

Disease

- [Cleft Lip](#)
- [Cleft Palate](#)