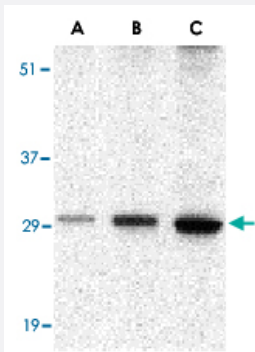


BCL2A1 polyclonal antibody

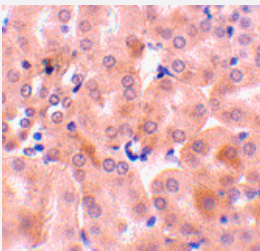
Catalog # PAB13211 Size 100 ug

Applications



Western Blot (Tissue lysate)

Western blot analysis of BCL2A1 in human kidney tissue lysate with BCL2A1 polyclonal antibody (Cat # PAB13211) at (A) 0.5, (B) 1 and (C) 2 ug/mL .



Immunohistochemistry (Formalin/PFA-fixed paraffin-embedded sections)

Immunohistochemistry of BCL2A1 in mouse kidney tissue with BCL2A1 polyclonal antibody (Cat # PAB13211) at 10 ug/mL .

Specification

Product Description	Rabbit polyclonal antibody raised against synthetic peptide of BCL2A1.
Immunogen	A synthetic peptide corresponding to C-terminus 14 amino acids of human BCL2A1.
Host	Rabbit
Reactivity	Human, Mouse
Form	Liquid
Recommend Usage	The optimal working dilution should be determined by the end user.

Storage Buffer	In PBS (0.02% sodium azide)
Storage Instruction	Store at 4°C for three months. For long term storage store at -20°C. Aliquot to avoid repeated freezing and thawing.
Note	This product contains sodium azide: a POISONOUS AND HAZARDOUS SUBSTANCE which should be handled by trained staff only.

Applications

- Western Blot (Tissue lysate)

Western blot analysis of BCL2A1 in human kidney tissue lysate with BCL2A1 polyclonal antibody (Cat # PAB13211) at (A) 0.5, (B) 1 and (C) 2 ug/mL .

- Immunohistochemistry (Formalin/PFA-fixed paraffin-embedded sections)

Immunohistochemistry of BCL2A1 in mouse kidney tissue with BCL2A1 polyclonal antibody (Cat # PAB13211) at 10 ug/mL .

Gene Info — BCL2A1

Entrez GeneID [597](#)

Protein Accession# [NP_004040](#)

Gene Name BCL2A1

Gene Alias ACC-1, ACC-2, BCL2L5, BFL1, GRS, HBPA1

Gene Description BCL2-related protein A1

Omim ID [601056](#)

Gene Ontology [Hyperlink](#)

Gene Summary

This gene encodes a member of the BCL-2 protein family. The proteins of this family form hetero- or homodimers and act as anti- and pro-apoptotic regulators that are involved in a wide variety of cellular activities such as embryonic development, homeostasis and tumorigenesis. The protein encoded by this gene is able to reduce the release of pro-apoptotic cytochrome c from mitochondria and block caspase activation. This gene is a direct transcription target of NF-kappa B in response to inflammatory mediators, and is up-regulated by different extracellular signals, such as granulocyte-macrophage colony-stimulating factor (GM-CSF), CD40, phorbol ester and inflammatory cytokine TNF and IL-1, which suggests a cytoprotective function that is essential for lymphocyte activation as well as cell survival. Alternatively spliced transcript variants encoding different isoforms have been found for this gene. [provided by RefSeq]

Other Designations hematopoietic BCL2-related protein A1

Publication Reference

- [Up-regulation of Bfl-1/A1 via NF-kappaB activation in cisplatin-resistant human bladder cancer cell line.](#)

Kim JK, Kim KD, Lee E, Lim JS, Cho HJ, Yoon HK, Cho MY, Baek KE, Park YP, Paik SG, Choe YK, Lee HG.

Cancer Letters 2004 Aug; 212(1):61.

Application: WB, Human, T24, T24R2 cells

- [Cell death in the third millennium.](#)

Lockshin RA, Osborne B, Zakeri Z.

Cell Death and Differentiation 2000 Jan; 7(1):2.

- [A novel Bcl-2 related gene, Bfl-1, is overexpressed in stomach cancer and preferentially expressed in bone marrow.](#)

Choi SS, Park IC, Yun JW, Sung YC, Hong SI, Shin HS.

Oncogene 1995 Nov; 11(9):1693.

Pathway

- [Metabolic pathways](#)

Disease

- [Cardiovascular Diseases](#)
- [Dermatitis](#)
- [Diabetes Mellitus](#)
- [Edema](#)
- [Genetic Predisposition to Disease](#)
- [Graft vs Host Disease](#)
- [Hematologic Diseases](#)
- [Hodgkin Disease](#)
- [Kidney Failure](#)

- [Lymphoma](#)
- [Lymphoproliferative Disorders](#)
- [Occupational Diseases](#)
- [Waldenstrom Macroglobulinemia](#)
- [Werner syndrome](#)