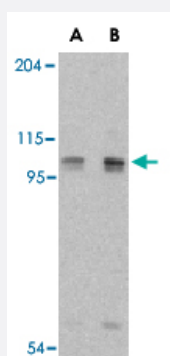


# AOF2 polyclonal antibody

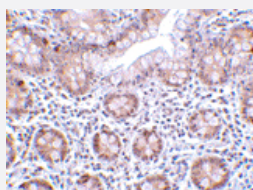
Catalog # PAB13190      Size 100 ug

## Applications



### Western Blot (Cell lysate)

Western blot analysis of AOF2 in P815 cell lysate with AOF2 polyclonal antibody (Cat # PAB13190) at (A) 1 and (B) 2 ug/mL .



### Immunohistochemistry (Formalin/PFA-fixed paraffin-embedded sections)

Immunohistochemistry of AOF2 in human small intestine tissue with AOF2 polyclonal antibody (Cat # PAB13190) at 2 ug/mL .

## Specification

<b>Product Description</b>	Rabbit polyclonal antibody raised against synthetic peptide of AOF2.
<b>Immunogen</b>	A synthetic peptide corresponding to internal region 16 amino acids of human AOF2.
<b>Host</b>	Rabbit
<b>Reactivity</b>	Human, Mouse, Rat
<b>Form</b>	Liquid
<b>Recommend Usage</b>	Western Blot (1-2 ug/mL) The optimal working dilution should be determined by the end user.

<b>Storage Buffer</b>	In PBS (0.02% sodium azide)
<b>Storage Instruction</b>	Store at 4°C for three months. For long term storage store at -20°C. Aliquot to avoid repeated freezing and thawing.
<b>Note</b>	This product contains sodium azide: a POISONOUS AND HAZARDOUS SUBSTANCE which should be handled by trained staff only.

## Applications

- Western Blot (Cell lysate)

Western blot analysis of AOF2 in P815 cell lysate with AOF2 polyclonal antibody (Cat # PAB13190) at (A) 1 and (B) 2 ug/mL .

- Immunohistochemistry (Formalin/PFA-fixed paraffin-embedded sections)

Immunohistochemistry of AOF2 in human small intestine tissue with AOF2 polyclonal antibody (Cat # PAB13190) at 2 ug/mL .

## Gene Info — AOF2

<b>Entrez GeneID</b>	<a href="#">23028</a>
<b>Protein Accession#</b>	<a href="#">NP_001009999</a>
<b>Gene Name</b>	AOF2
<b>Gene Alias</b>	BHC110, KDM1, KIAA0601, LSD1
<b>Gene Description</b>	amine oxidase (flavin containing) domain 2
<b>Omim ID</b>	<a href="#">609132</a>
<b>Gene Ontology</b>	<a href="#">Hyperlink</a>
<b>Gene Summary</b>	This gene encodes a nuclear protein containing a SWIRM domain, a FAD-binding motif, and an amine oxidase domain. This protein is a component of several histone deacetylase complexes, though it silences genes by functioning as a histone demethylase. Alternative splicing results in multiple transcript variants. [provided by RefSeq]
<b>Other Designations</b>	BRAF35-HDAC complex protein BHC110 FAD-binding protein BRAF35-HDAC complex, 110 kDa subunit lysine (K)-specific demethylase 1 lysine-specific histone demethylase 1

## Publication Reference

- [Histone demethylation mediated by the nuclear amine oxidase homolog LSD1.](#)

Shi Y, Lan F, Matson C, Mulligan P, Whetstone JR, Cole PA, Casero RA, Shi Y.

Cell 2004 Dec; 119(7):941.

- [ALL-1 is a histone methyltransferase that assembles a supercomplex of proteins involved in transcriptional regulation.](#)

Nakamura T, Mori T, Tada S, Krajewski W, Rozovskaia T, Wassell R, Dubois G, Mazo A, Croce CM, Canaani E.

Molecular Cell 2002 Nov; 10(5):1119.

- [Histone methylation in transcriptional control.](#)

Kouzarides T.

Current Opinion in Genetics & Development 2002 Apr; 12(2):198.