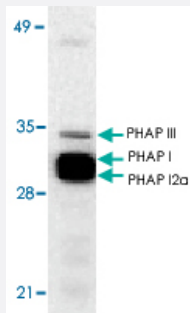


ANP32A polyclonal antibody

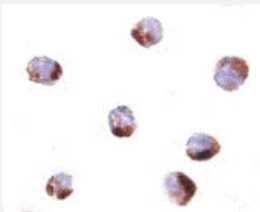
Catalog # PAB13111 Size 100 ug

Applications



Western Blot (Cell lysate)

Western blot analysis of ANP32A expression in human Raji cell lysate with ANP32A polyclonal antibody (Cat # PAB13111) at 1 ug/mL . The wide and strong band below PHAP III is a doublet composed of PHAP I (upper) and PHAP I2a (lower).



Immunocytochemistry

Immunocytochemistry of ANP32A in Raji cells with ANP32A polyclonal antibody (Cat # PAB13111) at 1 ug/mL .

Specification

Product Description	Rabbit polyclonal antibody raised against synthetic peptide of ANP32A.
Immunogen	A synthetic peptide corresponding to N-terminus of human ANP32A.
Host	Rabbit
Reactivity	Human, Mouse, Rat
Specificity	PHAP antibody can be used for detection of all three identified isoforms of PHAP including PHAP I, PHAP I2a, and PHAP III.
Form	Liquid

Recommend Usage	Western Blot (0.5-2 ug/mL) The optimal working dilution should be determined by the end user.
Storage Buffer	In PBS (0.02% sodium azide)
Storage Instruction	Store at 4°C for three months. For long term storage store at -20°C. Aliquot to avoid repeated freezing and thawing.
Note	This product contains sodium azide: a POISONOUS AND HAZARDOUS SUBSTANCE which should be handled by trained staff only.

Applications

- Western Blot (Cell lysate)

Western blot analysis of ANP32A expression in human Raji cell lysate with ANP32A polyclonal antibody (Cat # PAB13111) at 1 ug/mL . The wide and strong band below PHAP III is a doublet composed of PHAP I (upper) and PHAP I2a (lower).

- Immunohistochemistry

- Immunocytochemistry

Immunocytochemistry of ANP32A in Raji cells with ANP32A polyclonal antibody (Cat # PAB13111) at 1 ug/mL .

Gene Info — ANP32A

Entrez GeneID	8125
Protein Accession#	P39687
Gene Name	ANP32A
Gene Alias	C15orf1, I1PP2A, LANP, MAPM, MGC119787, MGC150373, PHAP1, PHAPI, PP32
Gene Description	acidic (leucine-rich) nuclear phosphoprotein 32 family, member A
Omim ID	600832
Gene Ontology	Hyperlink
Gene Summary	O
Other Designations	cerebellar leucine rich acidic nuclear protein inhibitor-1 of protein phosphatase-2A mapmodulin putative human HLA class II associated protein I

Publication Reference

- [Distinctive roles of PHAP proteins and prothymosin-alpha in a death regulatory pathway.](#)

Jiang X, Kim HE, Shu H, Zhao Y, Zhang H, Kofron J, Donnelly J, Burns D, Ng SC, Rosenberg S, Wang X.

Science 2003 Jan; 299(5604):223.

- [Apoptosis. Life and death decisions.](#)

Nicholson DW, Thornberry NA.

Science 2003 Jan; 299(5604):214.

Disease

- [Cardiovascular Diseases](#)
- [Diabetes Mellitus](#)
- [Edema](#)
- [Genetic Predisposition to Disease](#)
- [Osteoarthritis](#)