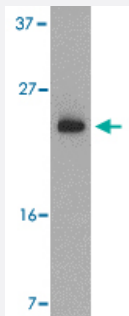


# BBC3 polyclonal antibody

Catalog # PAB13106

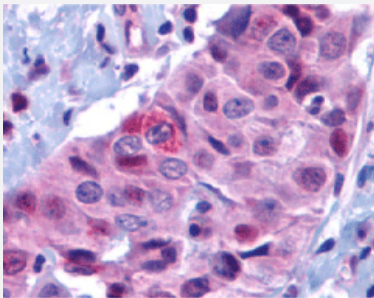
Size 100 ug

## Applications



### Western Blot (Cell lysate)

Western blot analysis of BBC3 expression in K-562 cell lysate with BBC3 polyclonal antibody (Cat # PAB13106) at 2 ug /mL .



### Immunohistochemistry (Formalin/PFA-fixed paraffin-embedded sections)

Immunohistochemistry of BBC3 in human breast carcinoma with BBC3 polyclonal antibody (Cat # PAB13106) at 10 ug/mL .

## Specification

Product Description	Rabbit polyclonal antibody raised against synthetic peptide of BBC3.
Immunogen	A synthetic peptide corresponding to N-terminus 14 amino acids of human BBC3.
Host	Rabbit
Reactivity	Human
Specificity	This sequence is identical between a and b forms of the PUMA proteins. K-562 cell lysate can be used as a positive control and a band at approximately 23 kDa can be detected. antibody can also detect PUMA by immunohistochemistry at 10 ug/mL.
Form	Liquid

<b>Recommend Usage</b>	Western Blot (2-4 ug/mL) The optimal working dilution should be determined by the end user.
<b>Storage Buffer</b>	In PBS (0.02% sodium azide)
<b>Storage Instruction</b>	Store at 4°C for three months. For long term storage store at -20°C. Aliquot to avoid repeated freezing and thawing.
<b>Note</b>	This product contains sodium azide: a POISONOUS AND HAZARDOUS SUBSTANCE which should be handled by trained staff only.

## Applications

- Western Blot (Cell lysate)

Western blot analysis of BBC3 expression in K-562 cell lysate with BBC3 polyclonal antibody (Cat # PAB13106) at 2 ug /mL .

- Immunohistochemistry (Formalin/PFA-fixed paraffin-embedded sections)

Immunohistochemistry of BBC3 in human breast carcinoma with BBC3 polyclonal antibody (Cat # PAB13106) at 10 ug/mL .

## Gene Info — BBC3

<b>Entrez GeneID</b>	<a href="#">27113</a>
<b>Protein Accession#</b>	<a href="#">NP_055232</a>
<b>Gene Name</b>	BBC3
<b>Gene Alias</b>	JFY1, PUMA
<b>Gene Description</b>	BCL2 binding component 3
<b>Omim ID</b>	<a href="#">605854</a>
<b>Gene Ontology</b>	<a href="#">Hyperlink</a>
<b>Other Designations</b>	Bcl-2 binding component 3

## Publication Reference

- [Expression of bbc3, a pro-apoptotic BH3-only gene, is regulated by diverse cell death and survival signals.](#)

Han J, Flemington C, Houghton AB, Gu Z, Zambetti GP, Lutz RJ, Zhu L, Chittenden T.

PNAS 2001 Sep; 98(20):11318.

- [PUMA, a novel proapoptotic gene, is induced by p53.](#)

Nakano K, Vousden KH.

Molecular Cell 2001 Mar; 7(3):683.

- [PUMA induces the rapid apoptosis of colorectal cancer cells.](#)

Yu J, Zhang L, Hwang PM, Kinzler KW, Vogelstein B.

Molecular Cell 2001 Mar; 7(3):673.

## Pathway

- [p53 signaling pathway](#)