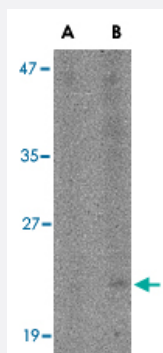


BST2 polyclonal antibody

Catalog # PAB13047 Size 100 ug

Applications



Western Blot (Cell lysate)

Western blot analysis of BST2 in Daudi cell lysate with BST2 polyclonal antibody (Cat # PAB13047) at (A) 1 and (B) 2 ug/mL .

Specification

Product Description	Rabbit polyclonal antibody raised against synthetic peptide of BST2.
Immunogen	A synthetic peptide corresponding to C-terminus 16 amino acids of human BST2.
Host	Rabbit
Reactivity	Human, Mouse
Form	Liquid
Recommend Usage	Western Blot (1-2 ug/mL) The optimal working dilution should be determined by the end user.
Storage Buffer	In PBS (0.02% sodium azide)
Storage Instruction	Store at 4°C for three months. For long term storage store at -20°C. Aliquot to avoid repeated freezing and thawing.
Note	This product contains sodium azide: a POISONOUS AND HAZARDOUS SUBSTANCE which should be handled by trained staff only.

Applications

- Western Blot (Cell lysate)

Western blot analysis of BST2 in Daudi cell lysate with BST2 polyclonal antibody (Cat # PAB13047) at (A) 1 and (B) 2 ug/mL .

Gene Info — BST2

Entrez GeneID	684
Protein Accession#	AAH87949
Gene Name	BST2
Gene Alias	CD317
Gene Description	bone marrow stromal cell antigen 2
Omim ID	600534
Gene Ontology	Hyperlink
Gene Summary	Bone marrow stromal cells are involved in the growth and development of B-cells. The specific function of the protein encoded by the bone marrow stromal cell antigen 2 is undetermined; however, this protein may play a role in pre-B-cell growth and in rheumatoid arthritis. [provided by RefSeq
Other Designations	tetherin

Publication Reference

- [A single nucleotide polymorphism in tetherin promotes retrovirus restriction in vivo.](#)

Barrett BS, Smith DS, Li SX, Guo K, Hasenkrug KJ, Santiago ML.

PLoS Pathogens 2012 Mar; 8(3):e1002596.

Application: Flow Cyt, Mouse, Splenocytes

- [Tetherin inhibits retrovirus release and is antagonized by HIV-1 Vpu.](#)

Neil SJ, Zang T, Bieniasz PD.

Nature 2008 Jan; 451(7177):425.

- [Molecular cloning and chromosomal mapping of a bone marrow stromal cell surface gene, BST2, that may be involved in pre-B-cell growth.](#)

Ishikawa J, Kaisho T, Tomizawa H, Lee BO, Kobune Y, Inazawa J, Oritani K, Itoh M, Ochi T, Ishihara K, et al..

Genomics 1995 Apr; 26(3):527.

Application: Flow Cyt, IP, Human, HEK 293T cells, MMSV3-3, NFSV1-1, NIH/3T3, RASV55, SynSV6-14 cells

Disease

- [Genetic Predisposition to Disease](#)
- [Ovarian Neoplasms](#)