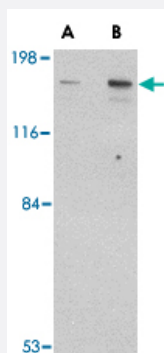


CLIP1 polyclonal antibody

Catalog # PAB13046

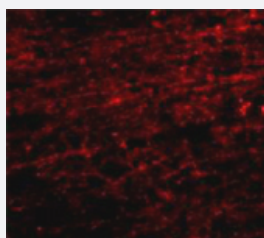
Size 100 ug

Applications



Western Blot (Tissue lysate)

Western blot analysis of CLIP1 in rat brain tissue lysate with CLIP1 polyclonal antibody (Cat # PAB13046) at (A) 0.5 and (B) 1 ug/mL .



Immunofluorescence

Immunofluorescence staining of human brain tissue with 20 ug/mL CLIP1 polyclonal antibody (Cat # PAB13046).

Specification

| | |
|----------------------------|--|
| Product Description | Rabbit polyclonal antibody raised against synthetic peptide of CLIP1. |
| Immunogen | A synthetic peptide corresponding to C-terminus 17 amino acids of human CLIP1. |
| Host | Rabbit |
| Reactivity | Human, Mouse, Rat |
| Form | Liquid |
| Recommend Usage | Western Blot (0.5-1 ug/mL) The optimal working dilution should be determined by the end user. |

| | |
|----------------------------|---|
| Storage Buffer | In PBS (0.02% sodium azide) |
| Storage Instruction | Store at 4°C for three months. For long term storage store at -20°C. Aliquot to avoid repeated freezing and thawing. |
| Note | This product contains sodium azide: a POISONOUS AND HAZARDOUS SUBSTANCE which should be handled by trained staff only. |

Applications

- Western Blot (Tissue lysate)

Western blot analysis of CLIP1 in rat brain tissue lysate with CLIP1 polyclonal antibody (Cat # PAB13046) at (A) 0.5 and (B) 1 ug/mL .

- Immunofluorescence

Immunofluorescence staining of human brain tissue with 20 ug/mL CLIP1 polyclonal antibody (Cat # PAB13046).

Gene Info — CLIP1

| | |
|---------------------------|---|
| Entrez GeneID | 6249 |
| Protein Accession# | NP_002947 |
| Gene Name | CLIP1 |
| Gene Alias | CLIP, CLIP-170, CLIP170, CYLN1, MGC131604, RSN |
| Gene Description | CAP-GLY domain containing linker protein 1 |
| Omim ID | 179838 |
| Gene Ontology | Hyperlink |
| Other Designations | Reed-Steinberg cell-expressed intermediate filament-associated protein cytoplasmic linker 1 rest in restin (Reed-Steinberg cell-expressed intermediate filament-associated protein) |

Publication Reference

- [Dynamic localization of CLIP-170 to microtubule plus ends is coupled to microtubule assembly.](#)

Diamantopoulos GS, Perez F, Goodson HV, Batelier G, Melki R, Kreis TE, Rickard JE.

The Journal of Cell Biology 1999 Jan; 144(1):99.

Application: IF, Human, HeLa cells

- [CLIP-170 links endocytic vesicles to microtubules.](#)

Pierre P, Scheel J, Rickard JE, Kreis TE.

Cell 1992 Sep; 70(6):887.

Application: IF, WB-Ce, Human, HeLa cells

- [Restin: a novel intermediate filament-associated protein highly expressed in the Reed-Sternberg cells of Hodgkin's disease.](#)

Bilbe G, Delabie J, Bruggen J, Richener H, Asselbergs FA, Cerletti N, Sorg C, Odink K, Tarcsay L, Wiesendanger W, et al..

The EMBO Journal 1992 Jun; 11(6):2103.

Application: IF, IHC-Fr, WB-Ce, Hamster, Human, CHO cells, HS445 cells, Human monocytes, Reed-Sternberg cells