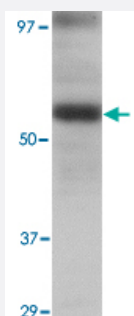


LGI3 polyclonal antibody

Catalog # PAB13026 Size 100 ug

Applications



Western Blot (Tissue lysate)

Western blot analysis of LGI3 in human brain tissue lysate with LGI3 polyclonal antibody (Cat # PAB13026) at 1 ug/mL .

Specification

Product Description	Rabbit polyclonal antibody raised against synthetic peptide of LGI3.
Immunogen	A synthetic peptide corresponding to internal region 12 amino acids of human LGI3.
Host	Rabbit
Reactivity	Human, Mouse, Rat
Form	Liquid
Recommend Usage	Western Blot (1-2 ug/mL) The optimal working dilution should be determined by the end user.
Storage Buffer	In PBS (0.02% sodium azide)
Storage Instruction	Store at 4°C for three months. For long term storage store at -20°C. Aliquot to avoid repeated freezing and thawing.
Note	This product contains sodium azide: a POISONOUS AND HAZARDOUS SUBSTANCE which should be handled by trained staff only.

Applications

- Western Blot (Tissue lysate)

Western blot analysis of LGI3 in human brain tissue lysate with LGI3 polyclonal antibody (Cat # PAB13026) at 1 ug/mL .

Gene Info — LGI3

Entrez GeneID [203190](#)

Protein Accession# [AAQ88483](#)

Gene Name LGI3

Gene Alias LGIL4

Gene Description leucine-rich repeat LGI family, member 3

Omim ID [608302](#)

Gene Ontology [Hyperlink](#)

Gene Summary O

Other Designations -

Publication Reference

- [Using gene-history and expression analyses to assess the involvement of LGI genes in human disorders.](#)

Gu W, Gibert Y, Wirth T, Elischer A, Bloch W, Meyer A, Steinlein OK, Begemann G.

Molecular Biology and Evolution 2005 Jul; 22(11):2209.

- [LGI1 mutations in temporal lobe epilepsies.](#)

Berkovic SF, Izzillo P, McMahon JM, Harkin LA, McIntosh AM, Phillips HA, Briellmann RS, Wallace RH, Mazarib A, Neufeld MY, Kocczyn AD, Scheffer IE, Mulley JC.

Neurology 2004 Apr; 62(7):1115.

- [A novel gene, LGI1, from 10q24 is rearranged and downregulated in malignant brain tumors.](#)

Chernova OB, Somerville RP, Cowell JK.

Oncogene 1998 Dec; 17(22):2873.