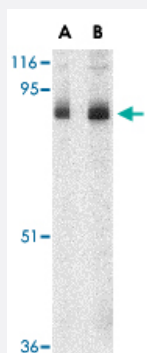


STIM1 polyclonal antibody

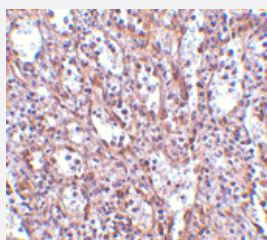
Catalog # PAB12992 Size 100 ug

Applications



Western Blot (Tissue lysate)

Western blot analysis of STIM1 in mouse thymus tissue lysate with STIM1 polyclonal antibody (Cat # PAB12992) at (A) 1 and (B) 2 ug/mL .



Immunohistochemistry (Formalin/PFA-fixed paraffin-embedded sections)

Immunohistochemistry of STIM1 in human spleen tissue with STIM1 polyclonal antibody (Cat # PAB12992) at 2.5 ug/mL .

Specification

Product Description	Rabbit polyclonal antibody raised against synthetic peptide of STIM1.
Immunogen	A synthetic peptide corresponding to C-terminus 24 amino acids of human STIM1.
Host	Rabbit
Reactivity	Human, Mouse, Rat
Form	Liquid
Recommend Usage	Western Blot (1-2 ug/mL) The optimal working dilution should be determined by the end user.

Storage Buffer	In PBS (0.02% sodium azide)
Storage Instruction	Store at 4°C for three months. For long term storage store at -20°C. Aliquot to avoid repeated freezing and thawing.
Note	This product contains sodium azide: a POISONOUS AND HAZARDOUS SUBSTANCE which should be handled by trained staff only.

Applications

- Western Blot (Tissue lysate)

Western blot analysis of STIM1 in mouse thymus tissue lysate with STIM1 polyclonal antibody (Cat # PAB12992) at (A) 1 and (B) 2 ug/mL .

- Immunohistochemistry (Formalin/PFA-fixed paraffin-embedded sections)

Immunohistochemistry of STIM1 in human spleen tissue with STIM1 polyclonal antibody (Cat # PAB12992) at 2.5 ug/mL .

Gene Info — STIM1

Entrez GeneID	6786
Protein Accession#	NP_003147
Gene Name	STIM1
Gene Alias	D11S4896E, GOK
Gene Description	stromal interaction molecule 1
Omim ID	605921
Gene Ontology	Hyperlink
Gene Summary	This gene encodes a type 1 transmembrane protein that mediates Ca ²⁺ influx after depletion of intracellular Ca ²⁺ stores by gating of store-operated Ca ²⁺ influx channels (SOCs). It is one of several genes located in the imprinted gene domain of 11p15.5, an important tumor-suppressor gene region. Alterations in this region have been associated with the Beckwith-Wiedemann syndrome, Wilms tumor, rhabdomyosarcoma, adrenocortical carcinoma, and lung, ovarian, and breast cancer. This gene may play a role in malignancies and disease that involve this region, as well as early hematopoiesis, by mediating attachment to stromal cells. This gene is oriented in a head-to-tail configuration with the ribonucleotide reductase 1 gene (RRM1), with the 3' end of this gene situated 1.6 kb from the 5' end of the RRM1 gene
Other Designations	-

Publication Reference

- [New insights into the molecular mechanisms of store-operated Ca²⁺ signaling in T cells.](#)

Luik RM, Lewis RS.

Trends in Molecular Medicine 2007 Mar; 13(3):103.

Application: WB-Ce, Human, G401, HL-60, K562, MG63, NFF, SKN-SH, WERI cells

- [STIM1 has a plasma membrane role in the activation of store-operated Ca\(2+\) channels.](#)

Spasova MA, Soboloff J, He LP, Xu W, Dziadek MA, Gill DL.

PNAS 2006 Mar; 103(11):4040.

Application: WB-Tr, Human, Rat, RBL, Jurkat cells

- [Coronavirus replication and pathogenesis: Implications for the recent outbreak of severe acute respiratory syndrome \(SARS\), and the challenge for vaccine development.](#)

Navas-Martin SR, Weiss S.

Journal of Neurovirology 2004 Apr; 10(2):75.