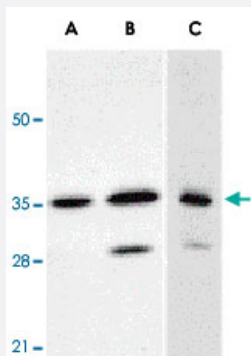


ANP32E polyclonal antibody

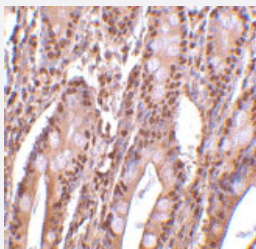
Catalog # PAB12900 Size 100 ug

Applications



Western Blot

Western blot analysis of ANP32E expression in human A-549 (A) and HepG2 (B) cells, and rat testis (C) with ANP32E polyclonal antibody (Cat # PAB12900) at 1 ug/mL .



Immunohistochemistry (Formalin/PFA-fixed paraffin-embedded sections)

Immunohistochemistry of ANP32E in human small intestine tissue with ANP32E polyclonal antibody (Cat # PAB12900) at 2 ug/mL .

Specification

Product Description	Rabbit polyclonal antibody raised against synthetic peptide of ANP32E.
Immunogen	A synthetic peptide corresponding to C-terminus of human ANP32E.
Host	Rabbit
Reactivity	Human, Mouse, Rat
Specificity	A band at approximately 35 KDa can be detected. PHAP III has no cross-reaction to PHAP I and PHAP I2a.
Form	Liquid

Recommend Usage	Western Blot (0.5-2 ug/mL) The optimal working dilution should be determined by the end user.
Storage Buffer	In PBS (0.02% sodium azide)
Storage Instruction	Store at 4°C for up to one year. Aliquot to avoid repeated freezing and thawing.
Note	This product contains sodium azide: a POISONOUS AND HAZARDOUS SUBSTANCE which should be handled by trained staff only.

Applications

- Western Blot

Western blot analysis of ANP32E expression in human A-549 (A) and HepG2 (B) cells, and rat testis (C) with ANP32E polyclonal antibody (Cat # PAB12900) at 1 ug/mL .

- Immunohistochemistry (Formalin/PFA-fixed paraffin-embedded sections)

Immunohistochemistry of ANP32E in human small intestine tissue with ANP32E polyclonal antibody (Cat # PAB12900) at 2 ug/mL .

Gene Info — ANP32E

Entrez GeneID	81611
Protein Accession#	NP_112182
Gene Name	ANP32E
Gene Alias	LANP-L, LANPL, MGC5350
Gene Description	acidic (leucine-rich) nuclear phosphoprotein 32 family, member E
Omim ID	609611
Gene Ontology	Hyperlink
Gene Summary	O
Other Designations	OTTHUMP00000014533 leucine-rich acidic nuclear protein like

Publication Reference

- [ANP32E induces tumorigenesis of triple-negative breast cancer cells by upregulating E2F1.](#)

Xiong Z, Ye L, Zhenyu H, Li F, Xiong Y, Lin C, Wu X, Deng G, Shi W, Song L, Yuan Z, Wang X.

Molecular Oncology 2018 Jun; 12(6):896.

Application: WB-Ce, WB-Ti, Human, BT-474, SK-BR-3, MDA-MB-361, ZR-75-30, BT-549, MDA-MB-231, MDA-MB-468, SUM159PT cells, Breast cancer

- [Distinctive roles of PHAP proteins and prothymosin-alpha in a death regulatory pathway.](#)

Jiang X, Kim HE, Shu H, Zhao Y, Zhang H, Kofron J, Donnelly J, Burns D, Ng SC, Rosenberg S, Wang X.

Science 2003 Jan; 299(5604):223.

- [Apoptosis. Life and death decisions.](#)

Nicholson DW, Thornberry NA.

Science 2003 Jan; 299(5604):214.