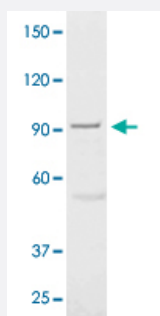


STAT5A polyclonal antibody

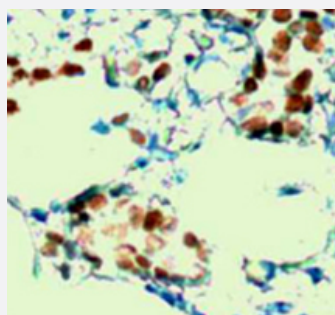
Catalog # PAB12786 Size 100 ug

Applications



Western Blot (Tissue lysate)

The tissue lysate derived from mouse liver was immunoblotted by STAT5A polyclonal antibody (Cat # PAB12786) at 1 : 500.



Immunohistochemistry (Formalin/PFA-fixed paraffin-embedded sections)

Immunohistochemical staining of human breast carcinoma tissue stained with STAT5A polyclonal antibody (Cat # PAB12786) at 1 : 100 for 10 min at RT. Staining of formalin-fixed tissue requires boiling tissue sections in 10 mM Citrate Buffer, pH 6.0 for 10 min followed by cooling at RT for 20 min.

Specification

Product Description	Rabbit polyclonal antibody raised against synthetic peptide of STAT5A.
Immunogen	A synthetic peptide corresponding to residues surrounding Y694 (DGYVK) of human, mouse and rat STAT5A.
Host	Rabbit
Reactivity	Human, Mouse, Rat
Specificity	This antibody recognizes STAT5A without a phosphorylated sites of Tyr694. It does not cross-react with phosphospecific peptide.
Form	Liquid

Quality Control Testing

Antibody Reactive Against Synthetic Peptide.

Recommend Usage

Western Blot (0.1-1 ug/mL)
ELISA (0.01-0.1 ug/mL)
Immunoprecipitation (2-5 ug/mL)
Immunohistochemistry (1:100)
The optimal working dilution should be determined by the end user.

Storage Buffer

In TBS, pH 7.2 (BSA, 10% Proclin300)

Storage Instruction

Store at 4°C. For long term storage store at -20°C or lower.
Aliquot to avoid repeated freezing and thawing.

Applications

- Western Blot (Tissue lysate)

The tissue lysate derived from mouse liver was immunoblotted by STAT5A polyclonal antibody (Cat # PAB12786) at 1 : 500.

- Immunohistochemistry (Formalin/PFA-fixed paraffin-embedded sections)

Immunohistochemical staining of human breast carcinoma tissue stained with STAT5A polyclonal antibody (Cat # PAB12786) at 1 : 100 for 10 min at RT. Staining of formalin-fixed tissue requires boiling tissue sections in 10 mM Citrate Buffer, pH 6.0 for 10 min followed by cooling at RT for 20 min.

- Immunoprecipitation

- Enzyme-linked Immunoabsorbent Assay

Gene Info — STAT5A

Entrez GeneID[6776](#)**Gene Name**

STAT5A

Gene Alias

MGF, STAT5

Gene Description

signal transducer and activator of transcription 5A

Omim ID[601511](#)**Gene Ontology**[Hyperlink](#)

Gene Summary

The protein encoded by this gene is a member of the STAT family of transcription factors. In response to cytokines and growth factors, STAT family members are phosphorylated by the receptor associated kinases, and then form homo- or heterodimers that translocate to the cell nucleus where they act as transcription activators. This protein is activated by, and mediates the responses of many cell ligands, such as IL2, IL3, IL7 GM-CSF, erythropoietin, thrombopoietin, and different growth hormones. Activation of this protein in myeloma and lymphoma associated with a TEL/JAK2 gene fusion is independent of cell stimulus and has been shown to be essential for the tumorigenesis. The mouse counterpart of this gene is found to induce the expression of BCL2L1/BCL-X(L), which suggests the antiapoptotic function of this gene in cells. [provided by RefSeq]

Other Designations

-

Gene Info — Stat5a

Entrez GeneID

[20850](#)

Gene Name

Stat5a

Gene Alias

AA959963, STAT5

Gene Description

signal transducer and activator of transcription 5A

Gene Ontology

[Hyperlink](#)

Other Designations

OTTMUSP00000002045|OTTMUSP00000002046|STAT5a variant delta E18|mammary gland factor STAT5A

Gene Info — Stat5a

Entrez GeneID

[24918](#)

Gene Name

Stat5a

Gene Alias

Stat5

Gene Description

signal transducer and activator of transcription 5A

Gene Ontology

[Hyperlink](#)

Other Designations

signal transducer and activator of transcription 5

Publication Reference

- [Cloning of human Stat5B. Reconstitution of interleukin-2-induced Stat5A and Stat5B DNA binding activity in COS-7 cells.](#)

Lin JX, Mietz J, Modi WS, John S, Leonard WJ.

The Journal of Biological Chemistry 1996 May; 271(18):10738.

Application: IP, IP-WB, WB-Ce, Rabbit, Reticulocyte

Pathway

- [Acute myeloid leukemia](#)
- [Chronic myeloid leukemia](#)
- [ErbB signaling pathway](#)
- [Jak-STAT signaling pathway](#)
- [Pathways in cancer](#)

Disease

- [Asthma](#)
- [Birth Weight](#)
- [Breast cancer](#)
- [Breast Neoplasms](#)
- [Bronchiolitis](#)
- [Carcinoma](#)
- [Disease Progression](#)
- [Genetic Predisposition to Disease](#)
- [Glioblastoma](#)
- [Glioma](#)
- [Hepatitis C](#)
- [Infant](#)
- [Leukemia](#)

- [Liver Neoplasms](#)
- [Lupus Erythematosus](#)
- [Meningeal Neoplasms](#)
- [Meningioma](#)
- [Respiratory Syncytial Virus Infections](#)
- [Viremia](#)