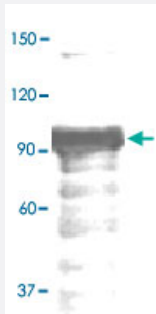


STAT4 (phospho Y693) polyclonal antibody

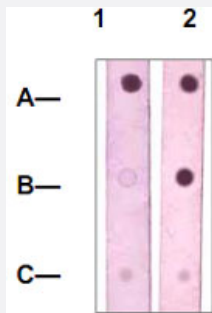
Catalog # PAB12755 Size 100 ug

Applications



Western Blot (Tissue lysate)

The whole tissue lysate derived from mouse kidney was immunoblotted by STAT4 (phospho Y693) polyclonal antibody (Cat # PAB12755) at 1 : 500.



Dot Blot (Peptide)

Dot Blot : 1 ug peptide was blot onto NC membrane.

A : STAT4 (pY694, Phospho-specific).

B : STAT4 (Paired Y694, Non phospho-speicfic).

C : Non-related phospho-specific peptide were blotted at a 1 : 2000 dilution by STAT4 (phospho Y693) polyclonal antibody (Cat # PAB12755).

Specification

Product Description	Rabbit polyclonal antibody raised against synthetic phosphopeptide of STAT4.
Immunogen	Synthetic phosphopeptide corresponding to residues surrounding Y693 of human, mouse, rat, bovine , chicken and dog STAT4.
Host	Rabbit
Reactivity	Human, Mouse
Specificity	This antibody recognizes STAT4 with a phosphorylated sites of Tyr693. It does not cross-react with n on-phosphospecific peptide.
Form	Liquid

Quality Control Testing

Antibody Reactive Against Synthetic Peptide.

Recommend Usage

Western Blot (0.1-1 ug/mL)
ELISA (0.01-0.1 ug/mL)
Immunoprecipitation (2-5 ug/mL)
Immunohistochemistry (1:50)
The optimal working dilution should be determined by the end user.

Storage Buffer

In TBS, pH 7.2 (BSA, 10% Proclin300)

Storage Instruction

Store at -20°C. For long term storage store at -80°C.
Aliquot to avoid repeated freezing and thawing.

Applications

- Western Blot (Tissue lysate)

The whole tissue lysate derived from mouse kidney was immunoblotted by STAT4 (phospho Y693) polyclonal antibody (Cat # PAB12755) at 1 : 500.

- Immunohistochemistry

- Immunoprecipitation

- Enzyme-linked Immunoabsorbent Assay

- Dot Blot (Peptide)

Dot Blot : 1 ug peptide was blot onto NC membrane.

A : STAT4 (pY694, Phospho-specific).

B : STAT4 (Paired Y694, Non phospho-specific).

C : Non-related phospho-specific peptide were blotted at a 1 : 2000 dilution by STAT4 (phospho Y693) polyclonal antibody (Cat # PAB12755).

Publication Reference

- [High basal STAT4 balanced by STAT1 induction to control type 1 interferon effects in natural killer cells.](#)

Miyagi T, Gil MP, Wang X, Louten J, Chu WM, Biron CA.

The Journal of Experimental Medicine 2007 Oct; 204(10):2383.

Application: Flow Cyt, WB, Mouse, Mouse natural killer cells, splenic cells