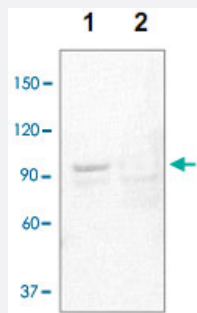


STAT3 (phospho Y705) polyclonal antibody

Catalog # PAB12754

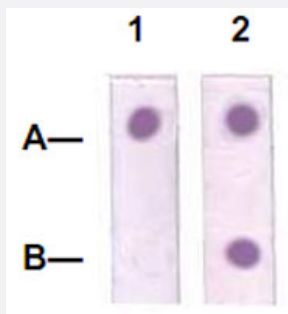
Size 100 ug

Applications



Western Blot (Cell lysate)

The whole cell lysate derived from A-431 with EGF stimulated (Lane 1) or without EGF stimulated (Lane 2) were immunoblotted by STAT3 (phospho Y705) polyclonal antibody (Cat # PAB12754) at 1 : 500.



Dot Blot (Peptide)

Dot Blot : 1 ug peptide was blot onto NC membrane.

A : STAT3 (pY705, Phospho-specific).

B : STAT3 (Paired Y705, Non phosphospecific).

Followed were blotted at a 1 : 2000 dilution by :

1. STAT3 (phospho Y705) polyclonal antibody (Cat # PAB12754).
2. Rabbit anti-STAT3 (Paired Y705).

Specification

Product Description	Rabbit polyclonal antibody raised against synthetic phosphopeptide of STAT3.
Immunogen	Synthetic phosphopeptide corresponding to residues surrounding Y705 of human, mouse, rat, bovine, chicken and dog STAT3.
Host	Rabbit
Reactivity	Human, Mouse
Specificity	This antibody recognizes STAT3 with a phosphorylated sites of Tyr705. It does not cross-react with non-phosphospecific peptide.
Form	Liquid

Purification	Site-modified Epitope Affinity Purification
Recommend Usage	ELISA (0.01-0.1 ug/mL) Immunohistochemistry (1:50) Immunoprecipitation (2-5 ug/mL) Western Blot (0.1-1 ug/mL) The optimal working dilution should be determined by the end user.
Storage Buffer	In TBS, pH 7.2 (antibody stabilizer).
Storage Instruction	Store at 4°C for three month without detectable loss of activity. For long term storage, store at -20°C to -80°C. Aliquot to avoid repeated freezing and thawing.

Applications

- Western Blot (Cell lysate)

The whole cell lysate derived from A-431 with EGF stimulated (Lane 1) or without EGF stimulated (Lane 2) were immunoblotted by STAT3 (phospho Y705) polyclonal antibody (Cat # PAB12754) at 1 : 500.

- Immunohistochemistry

- Immunoprecipitation

- Enzyme-linked Immunoabsorbent Assay

- Dot Blot (Peptide)

Dot Blot : 1 ug peptide was blot onto NC membrane.

A : STAT3 (pY705, Phospho-specific).

B : STAT3 (Paired Y705, Non phosphospecific).

Followed were blotted at a 1 : 2000 dilution by :

1. STAT3 (phospho Y705) polyclonal antibody (Cat # PAB12754).
2. Rabbit anti-STAT3 (Paired Y705).

Publication Reference

- [A new expression cloning strategy for isolation of substrate-specific kinases by using phosphorylation site-specific antibody.](#)

Matsuo R, Ochiai W, Nakashima K, Taga T.

Journal of Immunology 2001 Jan; 247(1-2):141.