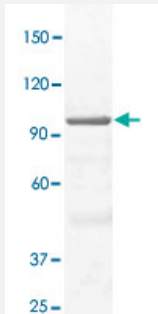


# STAT3 (phospho S727) polyclonal antibody

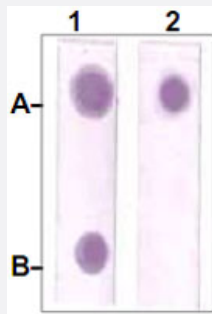
Catalog # PAB12753      Size 100 ug

## Applications



### Western Blot (Cell lysate)

The whole cell lysate derived from A-431 was immunoblotted by STAT3 (phospho S727) polyclonal antibody (Cat # PAB12753) at 1 : 500.



### Dot Blot (Peptide)

Dot Blot : 1 ug peptide was blot onto NC membrane.

A : STAT3 (pS727 , Phosphospecific).

B : STAT3 (Paired S727, Non phospho-speicfic).

Followed were blotted at a 1 : 2000 dilution by :

1 : STAT3 polyclonal antibody (Cat # PAB12784).

2 : STAT3 (phospho S727) polyclonal antibody (Cat # PAB12753).

## Specification

<b>Product Description</b>	Rabbit polyclonal antibody raised against synthetic phosphopeptide of STAT3.
<b>Immunogen</b>	Synthetic phosphopeptide corresponding to residues surrounding S727 of human, mouse, rat, bovine, chicken and dog STAT3.
<b>Host</b>	Rabbit
<b>Reactivity</b>	Human, Mouse, Rat
<b>Specificity</b>	This antibody recognizes STAT3 with a phosphorylated sites of Ser 727 . It does not cross-react with non-phosphospecific peptide.
<b>Form</b>	Liquid

Quality Control Testing	Antibody Reactive Against Synthetic Peptide.
Recommend Usage	Western Blot (0.1-1 ug/mL) ELISA (0.01-0.1 ug/mL) Immunoprecipitation (2-5 ug/mL) Immunohistochemistry (1:50) The optimal working dilution should be determined by the end user.
Storage Buffer	In TBS, pH 7.2 (BSA, 10% Proclin300)
Storage Instruction	Store at -20°C. For long term storage store at -80°C. Aliquot to avoid repeated freezing and thawing.

## Applications

- Western Blot (Cell lysate)

The whole cell lysate derived from A-431 was immunoblotted by STAT3 (phospho S727) polyclonal antibody (Cat # PAB12753) at 1 : 500.

- Immunohistochemistry

- Immunoprecipitation

- Enzyme-linked Immunoabsorbent Assay

- Dot Blot (Peptide)

Dot Blot : 1 ug peptide was blot onto NC membrane.

A : STAT3 (pS727 , Phosphospecific).

B : STAT3 (Paired S727, Non phospho-speicfic).

Followed were blotted at a 1 : 2000 dilution by :

1 : STAT3 polyclonal antibody (Cat # PAB12784).

2 : STAT3 (phospho S727) polyclonal antibody (Cat # PAB12753).

## Publication Reference

- [A new expression cloning strategy for isolation of substrate-specific kinases by using phosphorylation site-specific antibody.](#)

Matsuo R, Ochiai W, Nakashima K, Taga T.

Journal of Immunology 2001 Jan; 247(1-2):141.

Application: ELISA, IP, WB-Ce, WB-Tr, Bacteria, Monkey, BAFh130, COS-7 cells