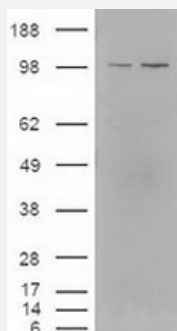


KIF11 polyclonal antibody

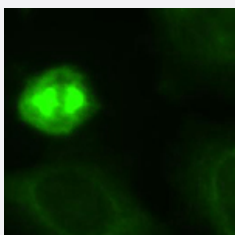
Catalog # PAB12408 Size 100 uL

Applications



Western Blot (Transfected lysate)

Western blot analysis of KIF11 on lysates of cells that were transfected with the pCMV6-ENTRY control or pCMV6-ENTRY KIF11 cDNA using KIF11 polyclonal antibody (Cat # PAB12408).



Immunofluorescence

Staining of KIF11 on HeLa cells fixed in 3.5% paraformaldehyde using KIF11 polyclonal antibody (Cat # PAB12408). Cytoplasmic staining during interphase and spindle staining during mitosis.

Specification

Product Description	Rabbit polyclonal antibody raised against partial recombinant KIF11.
Immunogen	Recombinant protein corresponding to coiled-coil region of human KIF11.
Host	Rabbit
Reactivity	Human, Mammals, Mouse, Pig, Primates, Rat
Specificity	This antibody is specific to Eg5.
Form	Liquid
Quality Control Testing	Antibody Reactive Against Recombinant Protein.

Recommend Usage	Immunofluorescence (1:1000) Immunoprecipitation (1:1000) Western Blot (1:1000) The optimal working dilution should be determined by the end user.
------------------------	--

Storage Buffer	In antiserum
-----------------------	--------------

Storage Instruction	Store at -20°C or -80°C. Aliquot to avoid repeated freezing and thawing.
----------------------------	---

Applications

- Western Blot (Transfected lysate)

Western blot analysis of KIF11 on lysates of cells that were transfected with the pCMV6-ENTRY control or pCMV6-ENTRY KIF11 cDNA using KIF11 polyclonal antibody (Cat # PAB12408).

- Immunofluorescence

Staining of KIF11 on HeLa cells fixed in 3.5% paraformaldehyde using KIF11 polyclonal antibody (Cat # PAB12408).
Cytoplasmic staining during interphase and spindle staining during mitosis.

- Immunoprecipitation

Gene Info — KIF11

Entrez GeneID	3832
----------------------	----------------------

Protein Accession#	P52732
---------------------------	------------------------

Gene Name	KIF11
------------------	-------

Gene Alias	EG5, HKSP, KNSL1, TRIP5
-------------------	-------------------------

Gene Description	kinesin family member 11
-------------------------	--------------------------

Omim ID	148760
----------------	------------------------

Gene Ontology	Hyperlink
----------------------	---------------------------

Gene Summary	This gene encodes a motor protein that belongs to the kinesin-like protein family. Members of this protein family are known to be involved in various kinds of spindle dynamics. The function of this gene product includes chromosome positioning, centrosome separation and establishing a bipolar spindle during cell mitosis. [provided by RefSeq]
---------------------	--

Other Designations	OTTHUMP00000020099 kinesin-like 1 kinesin-like spindle protein kinesin-related motor protein thyroid receptor interacting protein 5
---------------------------	---

Publication Reference

- [Prophase microtubule arrays undergo flux-like behavior in mammalian cells.](#)

Ferenz NP, Wadsworth P.

Molecular Biology of the Cell 2007 Oct; 18(10):3993.

Application: IF, Human, LLC-Pk1-PA cells

Disease

- [Alzheimer disease](#)
- [Diabetes Mellitus](#)
- [Genetic Predisposition to Disease](#)
- [Glucose Intolerance](#)