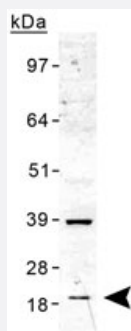


# TMED10 polyclonal antibody

Catalog # PAB11998      Size 100 uL

## Applications



### Western Blot (Tissue lysate)

Western blot analysis of TMED10 in human liver lysate with TMED10 polyclonal antibody (Cat # PAB11998).

## Specification

<b>Product Description</b>	Rabbit polyclonal antibody raised against synthetic peptide of TMED10.
<b>Immunogen</b>	A synthetic peptide corresponding to amino acids 50-150 of human TMED10.
<b>Host</b>	Rabbit
<b>Reactivity</b>	Bovine, Human, Mouse, Primates, Rabbit, Rat, Xenopus
<b>Form</b>	Liquid
<b>Recommend Usage</b>	Western Blot (2 ug/mL) Immunohistochemistry (1 ug/mL) The optimal working dilution should be determined by the end user.
<b>Storage Buffer</b>	In PBS (30% glycerol, 0.09% sodium azide)
<b>Storage Instruction</b>	Store at -20°C or -80°C. Aliquot to avoid repeated freezing and thawing.
<b>Note</b>	This product contains sodium azide: a POISONOUS AND HAZARDOUS SUBSTANCE which should be handled by trained staff only.

## Applications

- Western Blot (Tissue lysate)

Western blot analysis of TMED10 in human liver lysate with TMED10 polyclonal antibody (Cat # PAB11998).

- Immunohistochemistry

## Gene Info — TMED10

Entrez GeneID [10972](#)

Protein Accession# [P49755](#)

Gene Name TMED10

Gene Alias P24(Delta), S31I125, S31III125, TMP21, Tmp-21-I

Gene Description transmembrane emp24-like trafficking protein 10 (yeast)

Omim ID [605406](#)

Gene Ontology [Hyperlink](#)

**Gene Summary** This gene is a member of the EMP24/GP25L/p24 family and encodes a protein with a GOLD domain. This type I membrane protein is localized to the plasma membrane and golgi cisternae and is involved in vesicular protein trafficking. The protein is also a member of a heteromeric secretase complex and regulates the complex's gamma-secretase activity without affecting its epsilon-secretase activity. Mutations in this gene have been associated with early-onset familial Alzheimer's disease. This gene has a pseudogene on chromosome 8. [provided by RefSeq]

**Other Designations** 21 kDa transmembrane trafficking protein|transmembrane emp24 domain-containing protein 10

## Disease

- [Diabetes Mellitus](#)