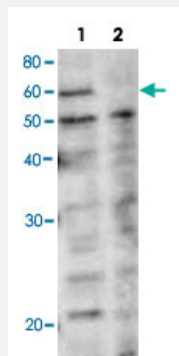


rad22 polyclonal antibody

Catalog # PAB1173

Size 50 ug

Applications



Immunoprecipitation

Western blot analysis of rad22 in yeast whole cell extracts.

M : Molecular weight markers (kD).

Lane 1 : Wild-type strain.

Lane 2 : rad22 deletion strain.

Specification

Product Description	Rabbit polyclonal antibody raised against full length recombinant <i>Schizosaccharomyces pombe</i> rad 22.
Immunogen	Recombinant protein corresponding to full length <i>Schizosaccharomyces pombe</i> rad22.
Host	Rabbit
Form	Liquid
Recommend Usage	Western Blot (1:2000-1:5000) The optimal working dilution should be determined by the end user.
Storage Buffer	In buffer containing 0.09% sodium azide
Storage Instruction	Store at 4°C.
Note	This product contains sodium azide: a POISONOUS AND HAZARDOUS SUBSTANCE which should be handled by trained staff only.

Applications

- Western Blot
- Immunofluorescence
- Immunoprecipitation

Western blot analysis of rad22 in yeast whole cell extracts.

M : Molecular weight markers (kD).

Lane 1 : Wild-type strain.

Lane 2 : rad22 deletion strain.

Gene Info — rad22

Entrez GeneID	2543086
---------------	-------------------------

Gene Name	rad22
-----------	-------

Gene Alias	-
------------	---

Gene Description	DNA repair protein Rad22
------------------	--------------------------

Gene Ontology	Hyperlink
---------------	---------------------------

Other Designations	-
--------------------	---