

# ZEB1 polyclonal antibody

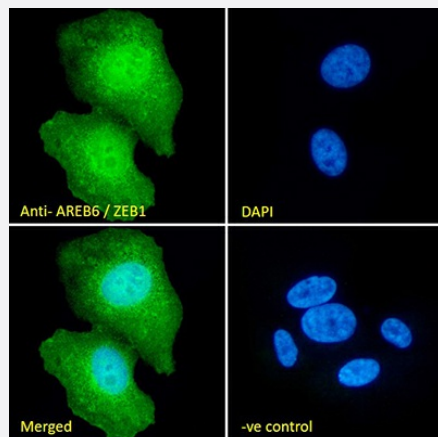
Catalog # PAB11610      Size 100 ug

## Applications



### Western Blot (Tissue lysate)

ZEB1 polyclonal antibody (Cat # PAB11610) (0.05 ug/mL) staining of mouse heart lysate (35 ug protein in RIPA buffer). Primary incubation was 1 hour. Detected by chemiluminescence.



### Immunofluorescence

ZEB1 polyclonal antibody (Cat # PAB11610) Immunofluorescence analysis of paraformaldehyde fixed U2OS cells, permeabilized with 0.15% Triton. Primary incubation 1hr (10 µg/mL) followed by Alexa Fluor 488 secondary antibody ( µg/mL), showing nuclear and cytoplasmic staining. The nuclear stain is DAPI (blue). Negative control: Unimmunized goat IgG (10 µg/mL) followed by Alexa Fluor 488 secondary antibody (2 µg/mL).

## Specification

<b>Product Description</b>	Goat polyclonal antibody raised against synthetic peptide of ZEB1.
<b>Immunogen</b>	A synthetic peptide corresponding to human ZEB1.
<b>Sequence</b>	C-RPQIRQKIENKPLQE
<b>Host</b>	Goat
<b>Theoretical MW (kDa)</b>	122, 124

Reactivity	Human, Mouse
Form	Liquid
Purification	Antigen affinity purification
Concentration	0.5 mg/mL
Quality Control Testing	Antibody Reactive Against Synthetic Peptide.
Recommend Usage	ELISA (1:32000) Immunofluorescence (10 µg/mL) Western Blot (0.05-0.2 µg/mL) The optimal working dilution should be determined by the end user.
Storage Buffer	In Tris saline, pH 7.3 (0.5% BSA, 0.02% sodium azide)
Storage Instruction	Store at -20°C. Aliquot to avoid repeated freezing and thawing.
Note	This product contains sodium azide: a POISONOUS AND HAZARDOUS SUBSTANCE which should be handled by trained staff only.

## Applications

- Western Blot (Tissue lysate)

ZEB1 polyclonal antibody (Cat # PAB11610) (0.05 µg/mL) staining of mouse heart lysate (35 µg protein in RIPA buffer). Primary incubation was 1 hour. Detected by chemiluminescence.

- Immunofluorescence

ZEB1 polyclonal antibody (Cat # PAB11610) Immunofluorescence analysis of paraformaldehyde fixed U2OS cells, permeabilized with 0.15% Triton. Primary incubation 1hr (10 µg/mL) followed by Alexa Fluor 488 secondary antibody (10 µg/mL), showing nuclear and cytoplasmic staining. The nuclear stain is DAPI (blue). Negative control: Unimmunized goat IgG (10 µg/mL) followed by Alexa Fluor 488 secondary antibody (2 µg/mL).

- Enzyme-linked Immunoabsorbent Assay

## Gene Info — ZEB1

Entrez GeneID	<a href="#">6935</a>
Protein Accession#	<a href="#">NP_001121600.1;NP_110378.3</a>
Gene Name	ZEB1

<b>Gene Alias</b>	AREB6, BZP, DELTA-EF1, MGC133261, NIL-2-A, NIL-2A, NIL2A, TCF8, ZEB, ZFHEP, ZFHX1A
<b>Gene Description</b>	zinc finger E-box binding homeobox 1
<b>Omim ID</b>	<a href="#">189909 609141</a>
<b>Gene Ontology</b>	<a href="#">Hyperlink</a>
<b>Gene Summary</b>	ZEB1 encodes a zinc finger transcription factor that represses T-lymphocyte-specific IL2 gene (MIM 147680) expression by binding to a negative regulatory domain 100 nucleotides 5-prime of the IL2 transcription start site (Williams et al., 1991 [PubMed 1840704]).[supplied by OMIM]
<b>Other Designations</b>	OTTHUMP00000019405 transcription factor 8 (represses interleukin 2 expression) zinc finger homeodomain enhancer-binding protein

## Publication Reference

- [Endoplasmic reticulum protein 29 regulates epithelial cell integrity during the mesenchymal-epithelial transition in breast cancer cells.](#)  
 Bambang IF, Lee YK, Richardson DR, Zhang D.  
 Oncogene 2013 Mar; 32(10):1240.  
 Application: WB-Tr, Human, MDA-MB-231, BT549 cells
- [Endosomal sorting by Semaphorin 4A in retinal pigment epithelium supports photoreceptor survival.](#)  
 Toyofuku T, Nojima S, Ishikawa T, Takamatsu H, Tsujimura T, Uemura A, Matsuda J, Seki T, Kumanogoh A.  
 Genes & Development 2012 Apr; 26(8):816.
- [The miR-200 family determines the epithelial phenotype of cancer cells by targeting the E-cadherin repressors ZEB1 and ZEB2.](#)  
 Park SM, Gaur AB, Lengyel E, Peter ME.  
 Genes & Development 2008 Apr; 22(7):894.

## Disease

- [Alzheimer Disease](#)
- [Corneal Dystrophies](#)
- [Genetic Predisposition to Disease](#)