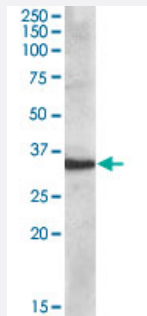


# APOF polyclonal antibody

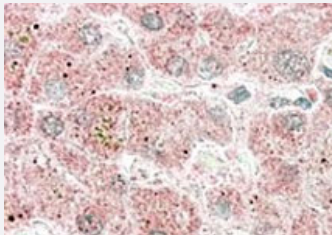
Catalog # PAB11492      Size 100 ug

## Applications



### Western Blot (Tissue lysate)

APOF polyclonal antibody (Cat # PAB11492) (0.5 ug/mL) staining of human liver lysate (35 ug protein in RIPA buffer). Primary incubation was 1 hour. Detected by chemiluminescence.



### Immunohistochemistry (Formalin/PFA-fixed paraffin-embedded sections)

APOF polyclonal antibody (Cat # PAB11492) (3.8 ug/mL) staining of paraffin embedded human liver. Steamed antigen retrieval with citrate buffer pH 6, AP-staining.

## Specification

Product Description	Goat polyclonal antibody raised against synthetic peptide of APOF.
Immunogen	A synthetic peptide corresponding to C-terminus of human APOF.
Sequence	C-KSYDLDPGAGSLE
Host	Goat
Theoretical MW (kDa)	35.4
Reactivity	Human
Form	Liquid

<b>Purification</b>	Antigen affinity purification
<b>Concentration</b>	0.5 mg/mL
<b>Recommend Usage</b>	ELISA (1:32000) Western Blot (0.3-1 ug/mL) Immunohistochemistry (Formalin/PFA-fixed paraffin-embedded sections) (2.5-3.8 ug/mL) The optimal working dilution should be determined by the end user.
<b>Storage Buffer</b>	In Tris saline, pH 7.3 (0.5% BSA, 0.02% sodium azide)
<b>Storage Instruction</b>	Store at -20°C. Aliquot to avoid repeated freezing and thawing.
<b>Note</b>	This product contains sodium azide: a POISONOUS AND HAZARDOUS SUBSTANCE which should be handled by trained staff only.

## Applications

- Western Blot (Tissue lysate)

APOF polyclonal antibody (Cat # PAB11492) (0.5 ug/mL) staining of human liver lysate (35 ug protein in RIPA buffer). Primary incubation was 1 hour. Detected by chemiluminescence.

- Immunohistochemistry (Formalin/PFA-fixed paraffin-embedded sections)

APOF polyclonal antibody (Cat # PAB11492) (3.8 ug/mL) staining of paraffin embedded human liver. Steamed antigen retrieval with citrate buffer pH 6, AP-staining.

- Enzyme-linked Immunoabsorbent Assay

## Gene Info — APOF

<b>Entrez GeneID</b>	<a href="#">319</a>
<b>Protein Accession#</b>	<a href="#">NP_001629.1</a>
<b>Gene Name</b>	APOF
<b>Gene Alias</b>	Apo-F, DKFZp781G18150, LTIP, MGC22520
<b>Gene Description</b>	apolipoprotein F
<b>Omim ID</b>	<a href="#">107760</a>
<b>Gene Ontology</b>	<a href="#">Hyperlink</a>

**Gene Summary**

The product of this gene is one of the minor apolipoproteins found in plasma. This protein forms complexes with lipoproteins and may be involved in transport and/or esterification of cholesterol. [provided by RefSeq]

**Other Designations**

-

## Publication Reference

- [Molecular cloning and expression of lipid transfer inhibitor protein reveals its identity with apolipoprotein F.](#)

Wang X, Driscoll DM, Morton RE.

The Journal of Biological Chemistry 1999 Jan; 274(3):1814.

Application: WB, WB-Tr, Human, Monkey, COS-7 cells, Human plasma

## Disease

- [Alzheimer disease](#)
- [Coronary Artery Disease](#)
- [Genetic Predisposition to Disease](#)
- [Hepatitis C](#)
- [Hypercholesterolemia](#)