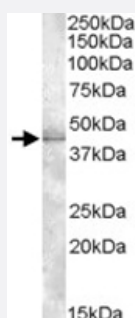


MBNL1 polyclonal antibody

Catalog # PAB11459

Size 100 ug

Applications



Western Blot (Cell lysate)

MBNL1 polyclonal antibody (Cat # PAB11459) (1 ug/mL) staining of HeLa lysate (35 ug protein in RIPA buffer). Primary incubation was 1 hour. Detected by chemiluminescence.

Specification

Product Description Goat polyclonal antibody raised against synthetic peptide of MBNL1.

Immunogen A synthetic peptide corresponding to human MBNL1.

Sequence C-SAEHLTSHKYVTQ

Host Goat

Theoretical MW (kDa) 41, 39.8, 41.8, 33.1

Reactivity Human

Form Liquid

Purification Antigen affinity purification

Concentration 0.5 mg/mL

Quality Control Testing Antibody Reactive Against Synthetic Peptide.

Recommend Usage
 ELISA (1:4000)
 Western Blot (1-3 ug/mL)
 The optimal working dilution should be determined by the end user.

Storage Buffer	In Tris saline, pH 7.3 (0.5% BSA, 0.02% sodium azide)
Storage Instruction	Store at -20°C. Aliquot to avoid repeated freezing and thawing.
Note	This product contains sodium azide: a POISONOUS AND HAZARDOUS SUBSTANCE which should be handled by trained staff only.

Applications

- Western Blot (Cell lysate)

MBNL1 polyclonal antibody (Cat # PAB11459) (1 ug/mL) staining of HeLa lysate (35 ug protein in RIPA buffer). Primary incubation was 1 hour. Detected by chemiluminescence.

- Enzyme-linked Immunoabsorbent Assay

Gene Info — MBNL1

Entrez GeneID	4154
Protein Accession#	NP_066368.2;NP_997175.1;NP_997176.1;NP_997177.1;NP_997178.1;NP_997179.1;NP_997180.1
Gene Name	MBNL1
Gene Alias	DKFZp686P06174, EXP, EXP35, EXP40, EXP42, KIAA0428, MBNL
Gene Description	muscleblind-like (Drosophila)
Omim ID	606516
Gene Ontology	Hyperlink
Other Designations	muscleblind-like 1

Publication Reference

- [MBNL binds similar RNA structures in the CUG repeats of myotonic dystrophy and its pre-mRNA substrate cardiac troponin T.](#)

Warf MB, Berglund JA.

RNA 2007 Dec; 13(12):2238.