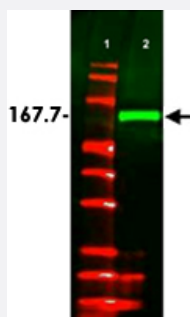


V5 epitope tag polyclonal antibody

Catalog # PAB11383 Size 100 ug

Applications

Western Blot (Recombinant protein)



V5 epitope tag polyclonal antibody (Cat # PAB11383) detects V5-tagged recombinant protein by western blot.

This antibody was used at 1.0 ug/mL to detect 0.05 ug (Lane 2) of full-length recombinant mouse serum albumin containing the V5 epitope tag at the carboxy end.

Comparison to MW markers (Lane 1) indicates detection of monomeric V5 tagged albumin.

A 4-20% gradient gel was used to separate the protein by SDS-PAGE under non-reducing conditions. The protein was transferred to nitrocellulose using standard methods.

After blocking the membrane was probed with the primary antibody overnight at 4°C followed by washes and reaction with a 1:10,000 dilution of IRDye™800 conjugated Gt-a-Rabbit IgG [H&L] for 45 min at room temperature.

LICOR's Odyssey® Infrared Imaging System was used to scan and process the image.

Specification

Product Description	Rabbit polyclonal antibody raised against synthetic peptide of V5 epitope tag.
Immunogen	A synthetic peptide (conjugated with KLH) corresponding to amino acids 95-108 of Simian virus 5 V 5 epitope tag.
Sequence	GKPIPPELLGLDST
Host	Rabbit

Specificity	This polyclonal anti-V5-tag antibody detects over-expressed proteins containing the V5 epitope tag. To date this antibody has reacted with all V5 tagged proteins tested so far. In western blotting of bacterial extracts This antibody does not cross-react with endogenous proteins. This antibody recognizes the V5-epitope tag (GKIPNPLLGLDST) fused to either the carboxy- terminal end of targeted proteins in transfected or transformed cells.
Form	Liquid
Quality Control Testing	Antibody Reactive Against Synthetic Peptide.
Recommend Usage	ELISA (1:10000-1:60000) Western Blot (1:5000-1:10000) Immunohistochemistry (1:500-1:3000) The optimal working dilution should be determined by the end user.
Storage Buffer	In 20 mM potassium phosphate buffer, 150 mM NaCl, pH 7.2 (0.01% sodium azide)
Storage Instruction	Store at 4°C. For long term storage store at -20°C. Aliquot to avoid repeated freezing and thawing.
Note	This product contains sodium azide: a POISONOUS AND HAZARDOUS SUBSTANCE which should be handled by trained staff only.

Applications

- Western Blot (Recombinant protein)

V5 epitope tag polyclonal antibody (Cat # PAB11383) detects V5-tagged recombinant protein by western blot.

This antibody was used at 1.0 ug/mL to detect 0.05 ug (Lane 2) of full-length recombinant mouse serum albumin containing the V5 epitope tag at the carboxy end.

Comparison to MW markers (Lane 1) indicates detection of monomeric V5 tagged albumin.

A 4-20% gradient gel was used to separate the protein by SDS-PAGE under non-reducing conditions. The protein was transferred to nitrocellulose using standard methods.

After blocking the membrane was probed with the primary antibody overnight at 4°C followed by washes and reaction with a 1:10,000 dilution of IRDye™800 conjugated Gt-a-Rabbit IgG [H&L] for 45 min at room temperature.

LICOR's Odyssey® Infrared Imaging System was used to scan and process the image.

- Immunohistochemistry

- Enzyme-linked Immunoabsorbent Assay

Gene Info — V/P

Entrez GeneID

[3160800](#)

Protein Accession#

[YP_138513](#)

Gene Name	V/P
Gene Alias	-
Gene Description	phosphoprotein
Gene Ontology	Hyperlink
Other Designations	V protein