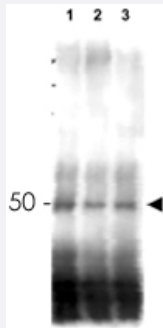


# MER2 polyclonal antibody

Catalog # PAB11356      Size 100 ug

## Applications

### Immunoprecipitation



Western blot using MER2 polyclonal antibody (Cat # PAB11356) shows detection of phosphorylated and unphosphorylated MER2 in wild type, phosphatase treated and mutant cells.

Lane 1 contains MER2-myc protein detected in wild type cells after first immunoprecipitating the protein using anti-myc antibody. Cells were harvested 4 h after the initiation of meiosis and therefore contain mostly phosphorylated MER2.

Lane 2 contains the same preparation after treatment with phosphatase.

Lane 3 contains MER2-S30A protein as a phosphorylation control.

This antibody is reactive with both phosphorylated and unphosphorylated MER2 at the S30 position. The primary antibody was used at a 1:5,000 dilution.

Personal Communication. Michael Lichten, NIH, CCR, Bethesda, MD.

## Specification

<b>Product Description</b>	Rabbit polyclonal antibody raised against synthetic peptide of MER2.
<b>Immunogen</b>	A synthetic peptide corresponding to amino acids 26-35 of <i>Saccharomyces cerevisiae</i> MER2.
<b>Host</b>	Rabbit
<b>Reactivity</b>	Yeast
<b>Specificity</b>	Reactivity occurs against <i>Saccharomyces cerevisiae</i> Mer2 protein and reactivity is independent of phosphorylation at residue S30.
<b>Form</b>	Liquid
<b>Quality Control Testing</b>	Antibody Reactive Against Synthetic Peptide.

<b>Recommend Usage</b>	ELISA (1:5000-1:25000) Western Blot (1:1000-1:10000) The optimal working dilution should be determined by the end user.
<b>Storage Buffer</b>	In 20 mM KH <sub>2</sub> PO <sub>4</sub> , 150 mM NaCl, pH 7.2 (0.01% sodium azide)
<b>Storage Instruction</b>	Store at 4°C. For long term storage store at -20°C. Aliquot to avoid repeated freezing and thawing.
<b>Note</b>	This product contains sodium azide: a POISONOUS AND HAZARDOUS SUBSTANCE which should be handled by trained staff only.

## Applications

- Western Blot

- Immunoprecipitation

Western blot using MER2 polyclonal antibody (Cat # PAB11356) shows detection of phosphorylated and unphosphorylated MER2 in wild type, phosphatase treated and mutant cells.

Lane 1 contains MER2-myc protein detected in wild type cells after first immunoprecipitating the protein using anti-myc antibody. Cells were harvested 4 h after the initiation of meiosis and therefore contain mostly phosphorylated MER2.

Lane 2 contains the same preparation after treatment with phosphatase.

Lane 3 contains MER2-S30A protein as a phosphorylation control.

This antibody is reactive with both phosphorylated and unphosphorylated MER2 at the S30 position. The primary antibody was used at a 1:5,000 dilution.

Personal Communication. Michael Lichten, NIH, CCR, Bethesda, MD.

- Enzyme-linked Immunoabsorbent Assay

## Gene Info — REC107

<b>Entrez GeneID</b>	<a href="#">853478</a>
<b>Protein Accession#</b>	<a href="#">P21651</a>
<b>Gene Name</b>	REC107
<b>Gene Alias</b>	MER2
<b>Gene Description</b>	Protein involved in early stages of meiotic recombination; involved in coordination between the initiation of recombination and the first division of meiosis; part of a complex (Rec107p-Mei4p-Rec114p) required for ds break formation
<b>Gene Ontology</b>	<a href="#">Hyperlink</a>

## Publication Reference

- [Antiviral protein Ski8 is a direct partner of Spo11 in meiotic DNA break formation, independent of its cytoplasmic role in RNA metabolism.](#)  
Arora C, Kee K, Maleki S, Keeney S.  
Molecular Cell 2004 Feb; 13(4):549.
- [PTF1 encodes an essential protein in Saccharomyces cerevisiae, which shows strong homology with a new putative family of PPlases.](#)  
Hani J, Stumpf G, Domdey H.  
FEBS Letters 1995 May; 365(2-3):198.
- [Molecular and genetic analysis of the yeast early meiotic recombination genes REC102 and REC107/MER2.](#)  
Cool M, Malone RE.  
Molecular and Cellular Biology 1992 Mar; 12(3):1248.