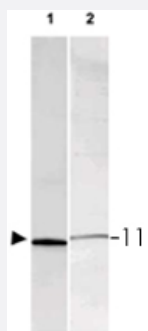


S100A1/S100B polyclonal antibody

Catalog # PAB11341

Size 500 ug

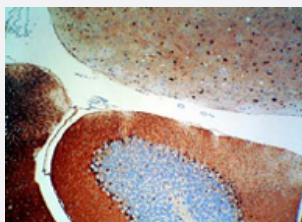
Applications



Western Blot

Western blot using S100A1/S100B polyclonal antibody (Cat # PAB11341) shows detection of a band ~11 KDa corresponding to bovine S100A1/S100B monomer (100 ng loaded, arrowhead lane 1).

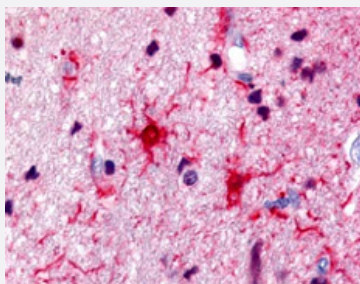
The antibody also detects S100A1/S100B from rat brain lysate (Lane 2). Approximately 35 ug of a rat brain whole cell lysate was separated by 16% SDS-PAGE and transferred onto nitrocellulose.



Immunohistochemistry (Formalin/PFA-fixed paraffin-embedded sections)

Immunohistochemistry of S100A1/S100B polyclonal antibody (Cat # PAB11341) was used at a 1:500 dilution to detect S100A1/S100B. Dark nuclear staining is observed within basket cells located near the Purkinje cells in the mouse cerebellum.

Personal Communication, Teri Johnson, Stowers Institute, Kansas City, MO.



Immunohistochemistry (Formalin/PFA-fixed paraffin-embedded sections)

Immunohistochemistry of S100A1/S100B polyclonal antibody (Cat # PAB11341) was used at a 1:500 dilution to detect S100A1/S100B by immunohistochemistry in human brain astrocyte tumor tissue.

Tissue was formalin-fixed and paraffin embedded.

Personal Communication, Alan Yen, Life Span Biosciences, Seattle, WA.

Specification

Product Description

Rabbit polyclonal antibody raised against full length recombinant S100A1/S100B.

Immunogen	Recombinant protein corresponding to full length bovine S100A1/S100B.
Host	Rabbit
Reactivity	Bovine, Dog, Mouse, Rat
Specificity	A 98% homology is noted for S100 alpha chain from primate sources. Mouse, rat and dog show 94 % homology with the bovine S100 alpha sequence. Expect cross reactivity with S100 from most mammalian sources. Homologies for the S100 beta chain are similar.
Form	Lyophilized
Quality Control Testing	Antibody Reactive Against Recombinant Protein.
Recommend Usage	ELISA (1:5000-1:25000) Western Blot (1:500-1:3000) Immunohistochemistry (1:200-1:2000) The optimal working dilution should be determined by the end user.
Storage Buffer	Lyophilized from 20 mM KH ₂ PO ₄ , 150 mM NaCl, pH 7.2 (0.01% sodium azide)
Storage Instruction	Store at 4°C. For long term storage store at -20°C. Aliquot after reconstitution to avoid repeated freezing and thawing.
Note	This product contains sodium azide: a POISONOUS AND HAZARDOUS SUBSTANCE which should be handled by trained staff only.

Applications

- Western Blot

Western blot using S100A1/S100B polyclonal antibody (Cat # PAB11341) shows detection of a band ~11 KDa corresponding to bovine S100A1/S100B monomer (100 ng loaded, arrowhead lane 1).

The antibody also detects S100A1/S100B from rat brain lysate (Lane 2). Approximately 35 ug of a rat brain whole cell lysate was separated by 16% SDS-PAGE and transferred onto nitrocellulose.

- Immunohistochemistry (Formalin/PFA-fixed paraffin-embedded sections)

Immunohistochemistry of S100A1/S100B polyclonal antibody (Cat # PAB11341) was used at a 1:500 dilution to detect S100A1/S100B.

Dark nuclear staining is observed within basket cells located near the Purkinje cells in the mouse cerebellum.

Personal Communication, Teri Johnson, Stowers Institute, Kansas City, MO.

- Immunohistochemistry (Formalin/PFA-fixed paraffin-embedded sections)

Immunohistochemistry of S100A1/S100B polyclonal antibody (Cat # PAB11341) was used at a 1:500 dilution to detect S100A1/S100B by immunohistochemistry in human brain astrocyte tumor tissue.

Tissue was formalin-fixed and paraffin embedded.

Personal Communication, Alan Yen, Life Span Biosciences, Seattle, WA.

- Enzyme-linked Immunoabsorbent Assay

Gene Info — S100B

Entrez GeneID	525716
Protein Accession#	P02639 (Bovine gene ID : 528735)
Gene Name	S100B
Gene Alias	MGC128275
Gene Description	S100 calcium binding protein B
Gene Ontology	Hyperlink
Gene Summary	beta polypeptide
Other Designations	S100 protein, beta polypeptide

Gene Info — S100A1

Entrez GeneID	528735
Protein Accession#	P02639 (Bovine gene ID : 528735)
Gene Name	S100A1
Gene Alias	MGC159706
Gene Description	S100 calcium binding protein A1
Gene Ontology	Hyperlink
Other Designations	-

Publication Reference

- [Acidic nanoparticles protect against \$\alpha\$ -synuclein-induced neurodegeneration through the restoration of lysosomal function.](#)

Marie-Laure Arotcarena, Federico N Soria, Anthony Cunha, Evelyne Doudnikoff, Geoffrey Prévot, Jonathan Daniel, Mireille Blanchard-Desce, Philippe Barthélémy, Erwan Bezard, Sylvie Crauste-Manciet, Benjamin Dehay.

Aging Cell 2022 Apr; 21(4):e13584.

Application: IHC, Mouse, Striatum, Substantia nigra

- [Brain injections of glial cytoplasmic inclusions induce a multiple system atrophy-like pathology.](#)

Margaux Teil, Sandra Dovero, Mathieu Bourdenx, Marie-Laure Arotcarena, Sandrine Camus, Gregory Porras, Marie-Laure Thiolat, Ines Trigo-Damas, Celine Perier, Cristina Estrada, Nuria Garcia-Carrillo, Michele Morari, Wassilios G Meissner, María Trinidad Herrero, Miquel Vila, Jose A Obeso, Erwan Bezard, Benjamin Dehay.

Brain 2022 Apr; 145(3):1001.

Application: IHC-Fr, Baboon, Baboon brain striatal

- [Transcription factor EB overexpression prevents neurodegeneration in experimental synucleinopathies.](#)

Arotcarena ML, Bourdenx M, Dutheil N, Thiolat ML, Doudnikoff E, Dovero S, Ballabio A, Fernagut PO, Meissner WG, Bezard E, Dehay B.

JCI Insight 2019 Aug; 4(16):129719.

Application: IHC-P, Mouse, Mouse striatal sections

- [Astrocytosis in parkinsonism: considering tripartite striatal synapses in physiopathology?](#)

Charron G, Doudnikoff E, Canron MH, Li Q, Véga C, Marais S, Baufreton J, Vital A, Oliet SH, Bezard E.

Frontiers in Aging Neuroscience 2014 Sep; 6:258.

Application: IHC, Mouse, Rat, Brain

- [Endogenous morphine-like compound immunoreactivity increases in parkinsonism.](#)

Charron G, Doudnikoff E, Laux A, Berthet A, Porras G, Canron MH, Barroso-Chinea P, Li Q, Qin C, Nosten-Bertrand M, Giros B, Delalande F, Van Dorsselaer A, Vital A, Goumon Y, Bezard E.

Brain 2011 Aug; 134(Pt 8):2321.

Application: IF, Rat, Brain

- [S100 beta is a target protein of neurocalcin delta, an abundant isoform in glial cells.](#)

Okazaki K, Obata NH, Inoue S, Hidaka H.

The Biochemical Journal 1995 Mar; 306 (Pt 2)(Pt 2):551.

- [Molecular cloning of cDNA of S100 alpha subunit mRNA.](#)

Kuwano R, Maeda T, Usui H, Araki K, Yamakuni T, Ohshima Y, Kurihara T, Takahashi Y.

FEBS Letters 1986 Jun; 202(1):97.

- [Ions binding to S100 proteins: structural changes induced by calcium and zinc on S100a and S100b proteins.](#)

Baudier J, Gerard D.

Biochemistry 1983 Jul; 22(14):3360.