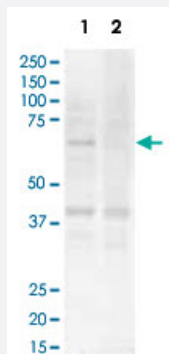


Zic2 polyclonal antibody

Catalog # PAB11336 Size 100 ug

Applications



Western Blot (Tissue lysate)

Western blot using Zic2 polyclonal antibody (Cat # PAB11336) shows detection of a band ~55 KDa (arrowhead) corresponding to Zic2 in lysates from (lane1) mouse brain and (Lane 2) rat brain.

Approximately 20 ug of each lysate was run on a SDS-PAGE and transferred onto nitrocellulose followed by reaction with a 1:500 dilution of Zic2 polyclonal antibody (Cat # PAB11336).

The upper band in the mouse brain lysate represents Zic2.

Specification

Product Description	Rabbit polyclonal antibody raised against synthetic peptide of Zic2.
Immunogen	A synthetic peptide corresponding to amino acids 189-206 of mouse Zic2.
Host	Rabbit
Reactivity	Chicken, Chimpanzee, Dog, Frog, Human, Mouse, Rat
Form	Liquid
Quality Control Testing	Antibody Reactive Against Synthetic Peptide.
Recommend Usage	ELISA (1:10000-1:50000) Western Blot (1:500-1:2000) The optimal working dilution should be determined by the end user.
Storage Buffer	In 20 mM KH ₂ PO ₄ , 150 mM NaCl, pH 7.2 (0.01% sodium azide)
Storage Instruction	Store at 4°C. For long term storage store at -20°C. Aliquot to avoid repeated freezing and thawing.

Note

This product contains sodium azide: a POISONOUS AND HAZARDOUS SUBSTANCE which should be handled by trained staff only.

Applications

- Western Blot (Tissue lysate)

Western blot using Zic2 polyclonal antibody (Cat # PAB11336) shows detection of a band ~55 KDa (arrowhead) corresponding to Zic2 in lysates from (lane1) mouse brain and (Lane 2) rat brain.

Approximately 20 ug of each lysate was run on a SDS-PAGE and transferred onto nitrocellulose followed by reaction with a 1:500 dilution of Zic2 polyclonal antibody (Cat # PAB11336).

The upper band in the mouse brain lysate represents Zic2.

- Enzyme-linked Immunoabsorbent Assay

Gene Info — Zic2

Entrez GeneID	22772
---------------	-----------------------

Protein Accession#	O95409;NP_009060
--------------------	----------------------------------

Gene Name	Zic2
-----------	------

Gene Alias	HPE5, Ku
------------	----------

Gene Description	zinc finger protein of the cerebellum 2
------------------	---

Gene Ontology	Hyperlink
---------------	---------------------------

Gene Summary	Drosophila)kumba odd-paired homolog
--------------	-------------------------------------

Other Designations	GENA 29 OTTMUSP00000022013 Zic family member 2 (odd-paired homolog, Drosophila)kumb a odd-paired homolog
--------------------	---

Publication Reference

- [Molecular screening of SHH, ZIC2, SIX3, and TGIF genes in patients with features of holoprosencephaly spectrum: Mutation review and genotype-phenotype correlations.](#)

Dubourg C, Lazaro L, Pasquier L, Bendavid C, Blayau M, Le Duff F, Durou MR, Odent S, David V.

Human Mutation 2004 Jul; 24(1):43.

- [Zic2 patterns binocular vision by specifying the uncrossed retinal projection.](#)

Herrera E, Brown L, Aruga J, Rachel RA, Dolen G, Mikoshiba K, Brown S, Mason CA.

Cell 2003 Sep; 114(5):545.

Application: IF, IHC, WB, Mouse, Mouse retina

- [Possible association of NTDs with a polyhistidine tract polymorphism in the ZIC2 gene.](#)

Brown LY, Hodge SE, Johnson WG, Guy SG, Nye JS, Brown S.

American Journal of Medical Genetics 2002 Mar; 108(2):128.