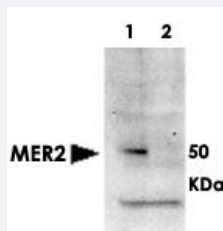


MER2 (phospho S30) polyclonal antibody

Catalog # PAB11308 Size 100 ug

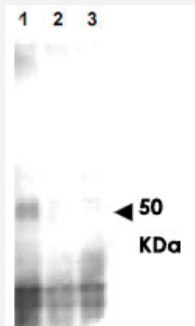
Applications

Western Blot (Cell lysate)



Western blot using MER2 (phospho S30) polyclonal antibody (Cat # PAB11308) shows detection of phosphorylated MER2 in whole cell extracts. Cells were either wild type (lane 1) or contained MER2 deletions (lane 2). Extracts were prepared from cells 4 hr after initiation of meiosis. Proteins were obtained using TCA precipitation. The primary antibody was used at a 1 : 7,500 dilution. Secondary antibody was used at 1:5,000 dilution. Personal Communication. Michael Lichten, NIH, CCR, Bethesda, MD.

Immunoprecipitation



Western blot using MER2 (phospho S30) polyclonal antibody (Cat # PAB11308) shows detection of phosphorylated MER2, but not phosphatase treated or mutant cells. Lane 1 contains MER2-myc protein detected in wild type cells after first immunoprecipitating the protein using anti-myc antibody. Cells were harvested 4 hrs after the initiation of meiosis and therefore contain mostly phosphorylated MER2. Lane 2 contains the same preparation after treatment with phosphatase. Lane 3 contains MER2-S30A protein as a phosphorylation control. This antibody appears to be specific for phosphorylated MER2 at the S30 position with negligible cross reactivity against unphosphorylated protein. The primary antibody was used at a 1 : 5,000 dilution. Personal Communication. Michael Lichten, NIH, CCR, Bethesda, MD.

Specification

Product Description

Rabbit polyclonal antibody raised against synthetic phosphopeptide of MER2.

Immunogen	Synthetic phosphopeptide corresponding to residues surrounding S30 of <i>Saccharomyces cerevisiae</i> MER2.
Host	Rabbit
Reactivity	Yeast
Specificity	Reactivity occurs against <i>Saccharomyces cerevisiae</i> Mer2 pS30 protein and This antibody is specific to the phosphorylated form of the protein. Reactivity with non-phosphorylated <i>Saccharomyces cerevisiae</i> Mer2 is minimal by ELISA and western blot.
Form	Liquid
Quality Control Testing	Antibody Reactive Against Synthetic Peptide.
Recommend Usage	ELISA (1:5000-1:25000) Western Blot (1:1000-1:10000) The optimal working dilution should be determined by the end user.
Storage Buffer	In 20 mM KH ₂ PO ₄ , 150 mM NaCl, pH 7.2 (0.01% sodium azide)
Storage Instruction	Store at 4°C. For long term storage store at -20°C. Aliquot to avoid repeated freezing and thawing.
Note	This product contains sodium azide: a POISONOUS AND HAZARDOUS SUBSTANCE which should be handled by trained staff only.

Applications

- Western Blot (Cell lysate)

Western blot using MER2 (phospho S30) polyclonal antibody (Cat # PAB11308) shows detection of phosphorylated MER2 in whole cell extracts.

Cells were either wild type (lane 1) or contained MER2 deletions (lane 2).

Extracts were prepared from cells 4 hr after initiation of meiosis.

Proteins were obtained using TCA precipitation.

The primary antibody was used at a 1 : 7,500 dilution.

Secondary antibody was used at 1:5,000 dilution.

Personal Communication. Michael Lichten, NIH, CCR, Bethesda, MD.

- Immunoprecipitation

Western blot using MER2 (phospho S30) polyclonal antibody (Cat # PAB11308) shows detection of phosphorylated MER2, but not phosphatase treated or mutant cells.

Lane 1 contains MER2-myc protein detected in wild type cells after first immunoprecipitating the protein using anti-myc antibody. Cells were harvested 4 hrs after the initiation of meiosis and therefore contain mostly phosphorylated MER2.

Lane 2 contains the same preparation after treatment with phosphatase.

Lane 3 contains MER2-S30A protein as a phosphorylation control.

This antibody appears to be specific for phosphorylated MER2 at the S30 position with negligible cross reactivity against unphosphorylated protein.

The primary antibody was used at a 1 : 5,000 dilution.

Personal Communication. Michael Lichten, NIH, CCR, Bethesda, MD.

- Enzyme-linked Immunoabsorbent Assay

Gene Info — REC107

Entrez GeneID	853478
---------------	------------------------

Protein Accession#	P21651
--------------------	------------------------

Gene Name	REC107
-----------	--------

Gene Alias	MER2
------------	------

Gene Description	Protein involved in early stages of meiotic recombination; involved in coordination between the initiation of recombination and the first division of meiosis; part of a complex (Rec107p-Mei4p-Rec114p) required for ds break formation
------------------	--

Gene Ontology	Hyperlink
---------------	---------------------------

Other Designations	Rec107p
--------------------	---------

Publication Reference

- [Antiviral protein Ski8 is a direct partner of Spo11 in meiotic DNA break formation, independent of its cytoplasmic role in RNA metabolism.](#)

Arora C, Kee K, Maleki S, Keeney S.

Molecular Cell 2004 Feb; 13(4):549.

- [PTF1 encodes an essential protein in *Saccharomyces cerevisiae*, which shows strong homology with a new putative family of PPlases.](#)

Hani J, Stumpf G, Domdey H.

FEBS Letters 1995 May; 365(2-3):198.

- [Molecular and genetic analysis of the yeast early meiotic recombination genes REC102 and REC107/MER2.](#)

Cool M, Malone RE.

Molecular and Cellular Biology 1992 Mar; 12(3):1248.