

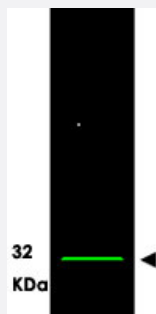
# VDAC1 polyclonal antibody

Catalog # PAB11290

Size 200 ug

## Applications

### Western Blot (Tissue lysate)



Western blot using VDAC1 polyclonal antibody (Cat # PAB11290) detects a single band at ~32 KDa corresponding to VDAC1 (arrowhead) present in a rat heart tissue lysate.

Approximately 35 ug of lysate was separated on a 4-20% Tris-Glycine gel by SDS-PAGE and transferred onto nitrocellulose.

After blocking, the membrane was probed with the primary antibody diluted to 1 : 1,200 at 4°C overnight.

Washes were followed by reaction with a 1 : 10,000 dilution of IRDye™800 conjugated Gt-a-Rabbit IgG [H&L] MXHu for 45 min at room temperature. IRDye™800 fluorescence image was captured using the Odyssey® Infrared Imaging System developed by LI-COR.

IRDye is a trademark of LI-COR, Inc.

## Specification

<b>Product Description</b>	Rabbit polyclonal antibody raised against synthetic peptide of VDAC1.
<b>Immunogen</b>	A synthetic peptide corresponding to amino acids 185-197 of human VDAC1.
<b>Host</b>	Rabbit
<b>Reactivity</b>	Birds, Human
<b>Specificity</b>	This affinity purified antibody is directed against human VDAC1/Porin1 protein. Cross reactivity will occur with all forms of VDACS including VDAC1, VDAC2 (4 isoforms) and VDAC3 (2 isoforms).
<b>Form</b>	Liquid
<b>Quality Control Testing</b>	Antibody Reactive Against Synthetic Peptide.

<b>Recommend Usage</b>	ELISA (1:10000-1:40000) Western Blot (1:500-1:2000) The optimal working dilution should be determined by the end user.
<b>Storage Buffer</b>	In 20 mM potassium phosphate buffer, 150 mM NaCl, pH 7.2 (0.01% sodium azide)
<b>Storage Instruction</b>	Store at 4°C. For long term storage store at -20°C. Aliquot to avoid repeated freezing and thawing.
<b>Note</b>	This product contains sodium azide: a POISONOUS AND HAZARDOUS SUBSTANCE which should be handled by trained staff only.

## Applications

- Western Blot (Tissue lysate)

Western blot using VDAC1 polyclonal antibody (Cat # PAB11290) detects a single band at ~32 KDa corresponding to VDAC1 (arrowhead) present in a rat heart tissue lysate.

Approximately 35 ug of lysate was separated on a 4-20% Tris-Glycine gel by SDS-PAGE and transferred onto nitrocellulose. After blocking, the membrane was probed with the primary antibody diluted to 1 : 1,200 at 4°C overnight.

Washes were followed by reaction with a 1 : 10,000 dilution of IRDye™800 conjugated Gt-a-Rabbit IgG [H&L] MXHu for 45 min at room temperature.

IRDye™800 fluorescence image was captured using the Odyssey® Infrared Imaging System developed by LI-COR.

IRDye is a trademark of LI-COR, Inc.

- Enzyme-linked Immunoabsorbent Assay

## Gene Info — VDAC1

<b>Entrez GeneID</b>	<a href="#">7416</a>
<b>Protein Accession#</b>	<a href="#">P21796(VDAC1);P45880(VDAC2)(isoform1);Q9Y277(VDAC3)(isoform1)</a>
<b>Gene Name</b>	VDAC1
<b>Gene Alias</b>	MGC111064, PORIN, PORIN-31-HL
<b>Gene Description</b>	voltage-dependent anion channel 1
<b>Omim ID</b>	<a href="#">604492</a>
<b>Gene Ontology</b>	<a href="#">Hyperlink</a>
<b>Other Designations</b>	OTTHUMP00000165946 OTTHUMP00000165947

## Publication Reference

- [Human SCO1 and SCO2 have independent, cooperative functions in copper delivery to cytochrome c oxidase.](#)

Leary SC, Kaufman BA, Pellicchia G, Guercin GH, Mattman A, Jaksch M, Shoubridge EA.

Human Molecular Genetics 2004 Sep; 13(17):1839.

Application: WB, Human, Fibroblasts, Myoblasts

- [Rapid induction of mitochondrial events and caspase-independent apoptosis in Survivin-targeted melanoma cells.](#)

Liu T, Brouha B, Grossman D.

Oncogene 2004 Jan; 23(1):39.

Application: WB-Tr, Human, YUSAC2 cells

- [In vivo adenoviral transfer of sorcin reverses cardiac contractile abnormalities of diabetic cardiomyopathy.](#)

Suarez J, Belke DD, Gloss B, Dieterle T, McDonough PM, Kim YK, Brunton LL, Dillmann WH.

American Journal of Physiology. Heart and Circulatory Physiology 2004 Jan; 286(1):H68.

Application: WB-Ti, Rat, Rat cardiac myocytes

## Pathway

- [Calcium signaling pathway](#)

## Disease

- [Genetic Predisposition to Disease](#)
- [Narcolepsy](#)