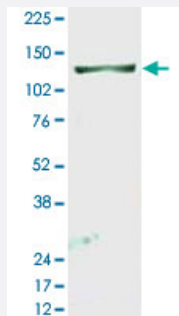


RBL2 polyclonal antibody

Catalog # PAB11266 Size 100 ug

Applications



Western Blot (Cell lysate)

Western blot using RBL2 polyclonal antibody (Cat # PAB11266) shows detection of endogenous RBL2 protein in whole LNCaP cell extracts.

The band at ~130 KDa (arrowhead).

The primary antibody was diluted 1 : 500.

Personal communication, Ang Sun, Sbarro Institute for Cancer Research and Molecular Medicine, Temple University, Philadelphia, PA.

Specification

Product Description	Rabbit polyclonal antibody raised against synthetic peptide of RBL2.
Immunogen	A synthetic peptide corresponding to the Spa310 domain of human RBL2.
Host	Rabbit
Reactivity	Chimpanzee, Human, Orangutan
Specificity	This antiserum is directed against Spa310 and reacts with the Spa3120 domain of pRb2/p130 from human tissues.
Form	Liquid
Quality Control Testing	Antibody Reactive Against Synthetic Peptide.
Recommend Usage	ELISA (1:75000-1:100000) Western Blot (1:500-1:5000) The optimal working dilution should be determined by the end user.
Storage Buffer	In 20 mM KH ₂ PO ₄ , 150 mM NaCl, pH 7.2 (0.09% sodium azide)

Storage Instruction

Store at 4°C. For long term storage store at -20°C.
Aliquot to avoid repeated freezing and thawing.

Note

This product contains sodium azide: a POISONOUS AND HAZARDOUS SUBSTANCE which should be handled by trained staff only.

Applications

- Western Blot (Cell lysate)

Western blot using RBL2 polyclonal antibody (Cat # PAB11266) shows detection of endogenous RBL2 protein in whole LNCaP cell extracts.

The band at ~130 KDa (arrowhead).

The primary antibody was diluted 1 : 500.

Personal communication, Ang Sun, Sbarro Institute for Cancer Research and Molecular Medicine, Temple University, Philadelphia, PA.

- Immunoprecipitation

- Enzyme-linked Immunoabsorbent Assay

Gene Info — RBL2

Entrez GeneID[5934](#)**Protein Accession#**[CAA52671;Q08999](#)**Gene Name**

RBL2

Gene Alias

FLJ26459, P130, Rb2

Gene Description

retinoblastoma-like 2 (p130)

Omim ID[180203](#)**Gene Ontology**[Hyperlink](#)**Other Designations**

-

Publication Reference

- [From G0 to S phase: a view of the roles played by the retinoblastoma \(Rb\) family members in the Rb-E2F pathway.](#)

Sun A, Bagella L, Tutton S, Romano G, Giordano A.

Journal of Cellular Biochemistry 2007 Dec; 102(6):1400.

- [A small molecule based on the pRb2/p130 spacer domain leads to inhibition of cdk2 activity, cell cycle arrest and tumor growth reduction in vivo.](#)

Bagella L, Sun A, Tonini T, Abbadessa G, Cottone G, Paggi MG, De Luca A, Claudio PP, Giordano A.

Oncogene 2007 Mar; 26(13):1829.

- [Frequent loss of pRb2/p130 in human ovarian carcinoma.](#)

D'Andrilli G, Masciullo V, Bagella L, Tonini T, Minimo C, Zannoni GF, Giuntoli RL 2nd, Carlson JA Jr, Soprano DR, Soprano KJ, Scambia G, Giordano A.

Clinical Cancer Research 2004 May; 10(9):3098.

Application: IHC-P, WB-Ti, Human, A2780, CAOV3 cells, Human ovarian carcinoma

Pathway

- [Cell cycle](#)
- [TGF-beta signaling pathway](#)

Disease

- [Genetic Predisposition to Disease](#)
- [Ovarian Neoplasms](#)