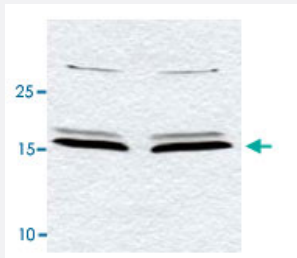


PIN1 polyclonal antibody

Catalog # PAB11244 Size 100 ug

Applications

Western Blot (Cell lysate)



Western blot using PIN1 polyclonal antibody (Cat # PAB11244) to detect endogenous PIN1 in HeLa whole cell lysates.

The sample was run in duplicate.

A band representing PIN1 is indicated by the arrowhead.

Cell lysates were electrophoresed using a straight 15% polyacrylamide gel, followed by transfer to nitrocellulose.

The membrane was probed with the primary antibody at a 1 : 700 dilution.

A 1 : 5,000 dilution of HRP Gt-a-Rabbit IgG was used with a 15 sec exposure time.

Personal Communication, L. D'agostino and A. Giordano, SHRO, Philadelphia, PA.

Specification

Product Description Rabbit polyclonal antibody raised against synthetic peptide of PIN1.

Immunogen A synthetic peptide corresponding to internal region of human PIN1.

Host Rabbit

Reactivity Bovine, Dog, Human, Monkey, Mouse, Rat

Form Liquid

Quality Control Testing Antibody Reactive Against Synthetic Peptide.

Recommend Usage
ELISA (1:2500-1:10000)
Western Blot (1:500-1:3000)
The optimal working dilution should be determined by the end user.

Storage Buffer In 20 mM KH₂PO₄, 150 mM NaCl, pH 7.2 (0.01% sodium azide)

Storage Instruction

Store at 4°C. For long term storage store at -20°C.
Aliquot to avoid repeated freezing and thawing.

Note

This product contains sodium azide: a POISONOUS AND HAZARDOUS SUBSTANCE which should be handled by trained staff only.

Applications

- Western Blot (Cell lysate)

Western blot using PIN1 polyclonal antibody (Cat # PAB11244) to detect endogenous PIN1 in HeLa whole cell lysates. The sample was run in duplicate.
A band representing PIN1 is indicated by the arrowhead.
Cell lysates were electrophoresed using a straight 15% polyacrylamide gel, followed by transfer to nitrocellulose. The membrane was probed with the primary antibody at a 1 : 700 dilution.
A 1 : 5,000 dilution of HRP Gt-a-Rabbit IgG was used with a 15 sec exposure time.
Personal Communication, L. D'agostino and A. Giordano, SHRO, Philadelphia, PA.

- Immunoprecipitation

- Enzyme-linked Immunoabsorbent Assay

Gene Info — PIN1

Entrez GeneID[5300](#)**Protein Accession#**[NP_006212:Q13526](#)**Gene Name**

PIN1

Gene Alias

DOD, UBL5

Gene Description

peptidylprolyl cis/trans isomerase, NIMA-interacting 1

Omim ID[601052](#)**Gene Ontology**[Hyperlink](#)**Gene Summary**

The human PIN1 gene encodes an essential nuclear peptidylprolyl cis-trans isomerase (PPlase; EC 5.2.1.8) involved in regulation of mitosis. PIN1 belongs to a class of PPlases that includes the E. coli parvulin, yeast Ess1, and Drosophila dodo (dod) gene products (Lu et al., 1996 [PubMed 8 606777]).[supplied by OMIM]

Other Designations

peptidyl-prolyl cis/trans isomerase, NIMA-interacting|prolyl isomerase|protein (peptidyl-prolyl cis/trans isomerase) NIMA-interacting 1|protein (peptidylprolyl cis/trans isomerase) NIMA-interacting 1

Publication Reference

- [The peptidyl-prolyl isomerase Pin1 regulates granulocyte-macrophage colony-stimulating factor mRNA stability in T lymphocytes.](#)

Esnault S, Shen ZJ, Whitesel E, Malter JS.

Journal of Immunology 2006 Nov; 177(10):6999.

Application: IP, WB, Human, HeLa cells, PBMCs, T lymphocytes

- [Aberrant expression of beta-catenin, Pin1 and cyclin D1 in salivary adenoid cystic carcinoma: relation to tumor proliferation and metastasis.](#)

Zhou CX, Gao Y.

Oncology Reports 2006 Sep; 16(3):505.

Application: IHC-P, WB-Ce, Human, ACC-2, ACC-M, SACC83, SACCLM (LM) cells, Human salivary adenoid cystic carcinomas

- [Prolyl isomerase Pin1 expression predicts prognosis in patients with esophageal squamous cell carcinoma and correlates with cyclinD1 expression.](#)

Fukuchi M, Fukai Y, Kimura H, Sohda M, Miyazaki T, Nakajima M, Masuda N, Tsukada K, Kato H, Kuwano H.

International Journal of Oncology 2006 Aug; 29(2):329.

Application: IHC-P, WB, Human, Human esophageal squamous cell carcinoma, Human esophageal squamous carcinoma-derived cell lines

Disease

- [Alzheimer disease](#)
- [Breast Neoplasms](#)
- [Carcinoma](#)
- [Cognition Disorders](#)
- [Genetic Predisposition to Disease](#)
- [Head and Neck Neoplasms](#)
- [Lung Neoplasms](#)
- [Pulmonary Disease](#)
- [Urinary Bladder Neoplasms](#)
- [Werner syndrome](#)