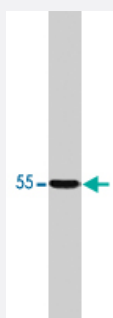


PPP2R2A polyclonal antibody

Catalog # PAB10419

Size 100 ug

Applications



Western Blot (Tissue lysate)

PPP2R2A polyclonal antibody (Cat # PAB10419) in western blot of total rat brain homogenate.

Specification

Product Description	Sheep polyclonal antibody raised against synthetic peptide of PPP2R2A.
Immunogen	A synthetic peptide (conjugated with KLH) corresponding to amino acids 14-27 of PPP2R2A.
Sequence	FSQVLGAVDDDDVAE
Host	Sheep
Reactivity	Bovine, Human, Mouse, Rat
Form	Liquid
Quality Control Testing	Antibody Reactive Against Synthetic Peptide.
Recommend Usage	Western blot (5 to 10 ug/mL) Immunocytochemistry (2 to 10 ug/mL) The optimal working dilution should be determined by the end user.
Storage Buffer	In PBS (0.08% sodium azide)
Storage Instruction	Store at -20°C. Aliquot to avoid repeated freezing and thawing.

Note

This product contains sodium azide: a POISONOUS AND HAZARDOUS SUBSTANCE which should be handled by trained staff only.

Applications

- Western Blot (Tissue lysate)

PPP2R2A polyclonal antibody (Cat # PAB10419) in western blot of total rat brain homogenate.

- Immunocytochemistry

Gene Info — PPP2R2A

Entrez GeneID [5520](#)

Gene Name PPP2R2A

Gene Alias B55-ALPHA, B55A, FLJ26613, MGC52248, PR52A, PR55A

Gene Description protein phosphatase 2 (formerly 2A), regulatory subunit B, alpha isoform

Omim ID [604941](#)

Gene Ontology [Hyperlink](#)

Gene Summary The product of this gene belongs to the phosphatase 2 regulatory subunit B family. Protein phosphatase 2 is one of the four major Ser/Thr phosphatases, and it is implicated in the negative control of cell growth and division. It consists of a common heteromeric core enzyme, which is composed of a catalytic subunit and a constant regulatory subunit, that associates with a variety of regulatory subunits. The B regulatory subunit might modulate substrate selectivity and catalytic activity. This gene encodes an alpha isoform of the regulatory subunit B55 subfamily. [provided by RefSeq]

Other Designations PP2A, subunit B, B-alpha isoform|PP2A, subunit B, B55-alpha isoform|PP2A, subunit B, PR55-alpha isoform|PP2A, subunit B, R2-alpha isoform|Serine/threonine protein phosphatase 2A, 55 KD A regulatory subunit B, alpha isoform|alpha isoform of regulatory subun

Pathway

- [Tight junction](#)

Disease

- [Breast Diseases](#)
- [Breast Neoplasms](#)
- [Disease Progression](#)
- [Disease Susceptibility](#)
- [HIV Infections](#)
- [Precancerous Conditions](#)