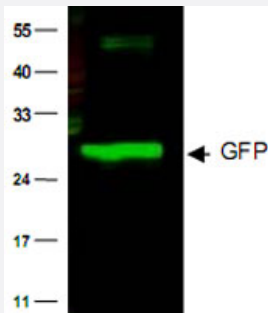


# GFP polyclonal antibody

Catalog # PAB10342      Size 100 ug

## Applications

### Western Blot (Cell lysate)



Western blot of GFP protein detected with GFP polyclonal antibody (Cat # PAB10342).

Wild type GFP (0.1 ug) was used to spike 30 ug of a HeLa whole cell lysate. This antibody detects a 27 KDa band corresponding to the epitope tag GFP. A 4-20% Tris-Glycine gradient gel was used for SDS-PAGE.

The protein was transferred to nitrocellulose using standard methods. After blocking with 5% BLOTTO in PBS, the membrane was probed overnight at 4°C with the primary antibody diluted in 5% BLOTTO to 1 : 1,000, followed by washes and reaction with a 1 : 10,000 dilution of IRDye® 800 conjugated Goat-a-Rabbit IgG [H&L] MX10.

IRDye® 800 fluorescence image was captured using the Odyssey® Infrared Imaging System developed by LI-COR.

IRDye is a trademark of LI-COR, Inc.

## Specification

<b>Product Description</b>	Rabbit polyclonal antibody raised against full length recombinant GFP.
<b>Immunogen</b>	Recombinant protein corresponding to full length jellyfish Aequorea victoria GFP.
<b>Host</b>	Rabbit
<b>Reactivity</b>	Jellyfishes
<b>Specificity</b>	No reaction was observed against human, Mouse or Rat serum proteins.
<b>Form</b>	Liquid
<b>Quality Control Testing</b>	Antibody Reactive Against Recombinant Protein.

<b>Recommend Usage</b>	ELISA (1:24000-1:100000) Western Blot (1:500-1:5000) Immunohistochemistry (1:200-1:3000) The optimal working dilution should be determined by the end user.
<b>Storage Buffer</b>	In 20 mM potassium phosphate buffer, 150 mM NaCl, pH 7.2 (0.01% sodium azide)
<b>Storage Instruction</b>	Store at 4°C. For long term storage store at -20°C. Aliquot to avoid repeated freezing and thawing.
<b>Note</b>	This product contains sodium azide: a POISONOUS AND HAZARDOUS SUBSTANCE which should be handled by trained staff only.

## Applications

- Western Blot (Cell lysate)

Western blot of GFP protein detected with GFP polyclonal antibody (Cat # PAB10342).

Wild type GFP (0.1 ug) was used to spike 30 ug of a HeLa whole cell lysate.

This antibody detects a 27 KDa band corresponding to the epitope tag GFP.

A 4-20% Tris-Glycine gradient gel was used for SDS-PAGE.

The protein was transferred to nitrocellulose using standard methods.

After blocking with 5% BLOTTO in PBS, the membrane was probed overnight at 4°C with the primary antibody diluted in 5% BLOTTO to 1 : 1,000, followed by washes and reaction with a 1 : 10,000 dilution of IRDye® 800 conjugated Goat-a-Rabbit IgG [H&L] MX10.

IRDye® 800 fluorescence image was captured using the Odyssey® Infrared Imaging System developed by LI-COR.

IRDye is a trademark of LI-COR, Inc.

- Immunohistochemistry

- Enzyme-linked Immunoabsorbent Assay