

GFP polyclonal antibody

Catalog # PAB10341

Size 1 mg

Applications

Western Blot (Transfected lysate)



Western blot of GFP recombinant protein detected with GFP polyclonal antibody (Cat # PAB10341).

Lane 1 shows detection of a 33 KDa band corresponding to a GFP containing recombinant protein (arrowhead) expressed in HeLa cells.

Lane 2 shows no staining of a mock transfected HeLa cell lysate.

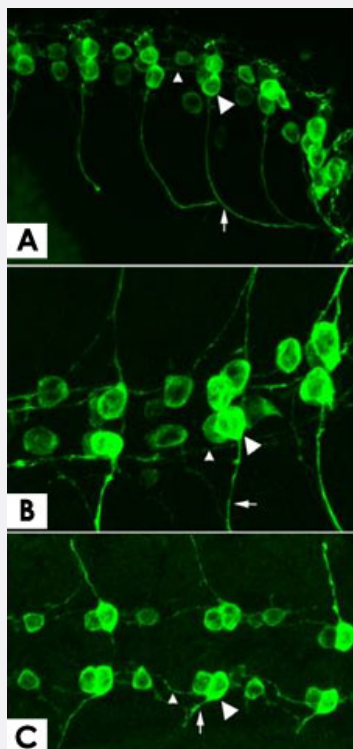
A 4-12% Bis-Tris gradient gel was used for SDS-PAGE.

The protein was transferred to nitrocellulose using standard methods.

After blocking the membrane was probed with the primary antibody diluted to 1.0 ug/mL for 1 h at room temperature followed by washes and reaction with a 1 : 2,500 dilution of IRDye® 800 conjugated Donkey-a-Goat IgG [H&L] MX7.

The IRDye® 800 fluorescence image was captured using the Odyssey® Infrared Imaging System developed by LI-COR.

IRDye is a trademark of LI-COR, Inc.



Immunofluorescence

Immunofluorescence microscopy of GFP polyclonal antibody (Cat # PAB10341) at a 1 : 1,000 dilution detects tau-GFP in cell bodies (large arrowhead) and axons of motoneurons (arrow) and interneurons (small arrowhead) in *Drosophila melanogaster* late stage embryonic central nervous system. AlexaFluor 488 conjugated anti-Goat antibody was used for detection at 1 : 300.

Panel A shows a lateral view (ventral left) and Panels B and C show ventral views of whole mount embryos at 63x magnification (plus 2x digital zoom).

Personal Communication, Helmata Mistry, Washington University School of Medicine, St. Louis, MO.

Specification

Product Description	Goat polyclonal antibody raised against full length recombinant GFP.
Immunogen	Recombinant protein corresponding to full length jellyfish <i>Aequorea victoria</i> GFP.
Host	Goat
Reactivity	Jellyfishes
Specificity	No reaction was observed against human, Mouse or Rat serum proteins.
Form	Liquid
Quality Control Testing	Antibody Reactive Against Recombinant Protein.
Recommend Usage	ELISA (1:40000) Western Blot (1:400-1:2000) Immunohistochemistry (1:200-1:1000) The optimal working dilution should be determined by the end user.
Storage Buffer	In 20 mM potassium phosphate buffer, 150 mM NaCl, pH 7.2 (0.01% sodium azide)
Storage Instruction	Store at 4°C. For long term storage store at -20°C. Aliquot to avoid repeated freezing and thawing.

Note

This product contains sodium azide: a POISONOUS AND HAZARDOUS SUBSTANCE which should be handled by trained staff only.

Applications

- Western Blot (Transfected lysate)

Western blot of GFP recombinant protein detected with GFP polyclonal antibody (Cat # PAB10341).

Lane 1 shows detection of a 33 KDa band corresponding to a GFP containing recombinant protein (arrowhead) expressed in HeLa cells.

Lane 2 shows no staining of a mock transfected HeLa cell lysate.

A 4-12% Bis-Tris gradient gel was used for SDS-PAGE.

The protein was transferred to nitrocellulose using standard methods.

After blocking the membrane was probed with the primary antibody diluted to 1.0 ug/mL for 1 h at room temperature followed by washes and reaction with a 1 : 2,500 dilution of IRDye® 800 conjugated Donkey-a-Goat IgG [H&L] MX7.

The IRDye® 800 fluorescence image was captured using the Odyssey® Infrared Imaging System developed by LI-COR.

IRDye is a trademark of LI-COR, Inc.

- Immunohistochemistry

- Immunofluorescence

Immunofluorescence microscopy of GFP polyclonal antibody (Cat # PAB10341) at a 1 : 1,000 dilution detects tau-GFP in cell bodies (large arrowhead) and axons of motoneurons (arrow) and interneurons (small arrowhead) in *Drosophila melanogaster* late stage embryonic central nervous system.

AlexaFluor 488 conjugated anti-Goat antibody was used for detection at 1 : 300.

Panel A shows a lateral view (ventral left) and Panels B and C show ventral views of whole mount embryos at 63x magnification (plus 2x digital zoom).

Personal Communication, Helmata Mistry, Washington University School of Medicine, St. Louis, MO.

- Enzyme-linked Immunoabsorbent Assay

Publication Reference

- [Differential activities of the *Drosophila* JAK/STAT pathway ligands Upd, Upd2 and Upd3.](#)

Wright VM, Vogt KL, Smythe E, Zeidler MP.

Cellular Signalling 2011 May; 23(5):920.

Application: ELISA, Conditioned media