

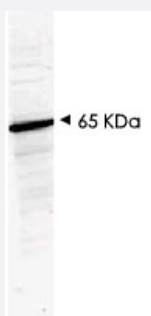
HDAC1 polyclonal antibody

Catalog # PAB10217

Size 100 ug

Applications

Western Blot (Cell lysate)



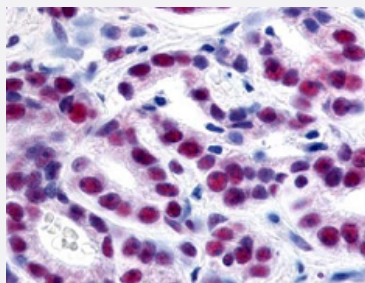
Western blot using HDAC1 polyclonal antibody (Cat # PAB10217) shows detection of a band at ~65 KDa corresponding to human HDAC1 present in a 293 whole cell lysate (arrowhead).

Approximately 35 ug of lysate wseparated on a 4-20% Tris-HEPES gel by SDS-PAGE and transferred onto nitrocellulose.

After blocking the membrane was probed with the primary antibody diluted to 1:1,350.

Reaction occurred 2 h at room temperature followed by washes and reaction with a 1 : 10,000 dilution of IRDyeas™800 conjugated Rb-a-Goat IgG [H&L] MXHu for 45 min at room temperature.

Immunohistochemistry (Formalin/PFA-fixed paraffin-embedded sections)

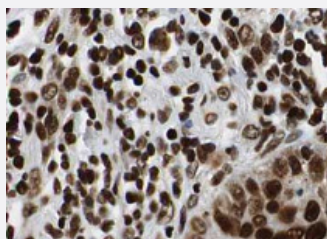


Immunohistochemistry of HDAC1 polyclonal antibody (Cat # PAB10217) was used at a 1 : 500 dilution to detect HDAC1 by immunohistochemistry in human prostate cancer tissue.

Tissue was formalin-fixed and paraffin embedded.

Personal Communication, Alan Yen, Life Span Biosciences, Seattle, WA.

Immunohistochemistry (Formalin/PFA-fixed paraffin-embedded sections)



Immunohistochemistry of HDAC1 polyclonal antibody (Cat # PAB10217) shows strong nuclear staining of tumor cells in human lung tissue.

Tissue was formalin-fixed and paraffin embedded.

Brown color indicates presence of protein, blue color shows cell nuclei.

Personal Communication, Kenneth Wester, www.proteinatlas.org, Upsala, Sweden.

Specification

| | |
|--------------------------------|--|
| Product Description | Rabbit polyclonal antibody raised against synthetic peptide of HDAC1. |
| Immunogen | A synthetic peptide corresponding to amino acids 466-482 of human HDAC1. |
| Host | Rabbit |
| Reactivity | Bovine, Chicken, Chimpanzee, Human, Mouse, Rat |
| Form | Liquid |
| Quality Control Testing | Antibody Reactive Against Synthetic Peptide. |
| Recommend Usage | ELISA (1:10000-1:50000) Western Blot (1:1000-1:5000) Immunohistochemistry (1:200-1:1000) The optimal working dilution should be determined by the end user. |
| Storage Buffer | In 20 mM KH ₂ PO ₄ , 150 mM NaCl, pH 7.2 (0.01% sodium azide) |
| Storage Instruction | Store at 4°C. For long term storage store at -20°C. Aliquot to avoid repeated freezing and thawing. |
| Note | This product contains sodium azide: a POISONOUS AND HAZARDOUS SUBSTANCE which should be handled by trained staff only. |

Applications

- Western Blot (Cell lysate)

Western blot using HDAC1 polyclonal antibody (Cat # PAB10217) shows detection of a band at ~65 KDa corresponding to human HDAC1 present in a 293 whole cell lysate (arrowhead).

Approximately 35 ug of lysate was separated on a 4-20% Tris-HEPES gel by SDS-PAGE and transferred onto nitrocellulose. After blocking the membrane was probed with the primary antibody diluted to 1:1,350.

Reaction occurred 2 h at room temperature followed by washes and reaction with a 1 : 10,000 dilution of IRDyeTM800 conjugated Rb-a-Goat IgG [H&L] MXHu for 45 min at room temperature.

- Immunohistochemistry (Formalin/PFA-fixed paraffin-embedded sections)

Immunohistochemistry of HDAC1 polyclonal antibody (Cat # PAB10217) was used at a 1 : 500 dilution to detect HDAC1 by immunohistochemistry in human prostate cancer tissue.

Tissue was formalin-fixed and paraffin embedded.

Personal Communication, Alan Yen, Life Span Biosciences, Seattle, WA.

- Immunohistochemistry (Formalin/PFA-fixed paraffin-embedded sections)

Immunohistochemistry of HDAC1 polyclonal antibody (Cat # PAB10217) shows strong nuclear staining of tumor cells in human lung tissue.

Tissue was formalin-fixed and paraffin embedded.

Brown color indicates presence of protein, blue color shows cell nuclei.

Personal Communication, Kenneth Wester, www.proteinatlas.org, Upsala, Sweden.

- Enzyme-linked Immunoabsorbent Assay

Gene Info — HDAC1

Entrez GeneID [3065](#)

Protein Accession# [Q13547;NP_004955](#)

Gene Name HDAC1

Gene Alias DKFZp686H12203, GON-10, HD1, RPD3, RPD3L1

Gene Description histone deacetylase 1

Omim ID [601241](#)

Gene Ontology [Hyperlink](#)

Gene Summary Histone acetylation and deacetylation, catalyzed by multisubunit complexes, play a key role in the regulation of eukaryotic gene expression. The protein encoded by this gene belongs to the histone deacetylase/acuc/apha family and is a component of the histone deacetylase complex. It also interacts with retinoblastoma tumor-suppressor protein and this complex is a key element in the control of cell proliferation and differentiation. Together with metastasis-associated protein-2, it deacetylates p53 and modulates its effect on cell growth and apoptosis. [provided by RefSeq]

Other Designations OTTHUMP00000008745|reduced potassium dependency, yeast homolog-like 1

Publication Reference

- [ICBP90, an E2F-1 target, recruits HDAC1 and binds to methyl-CpG through its SRA domain.](#)

Unoki M, Nishidate T, Nakamura Y.

Oncogene 2004 Oct; 23(46):7601.

Application: WB, Human, HEK 293T cells

- [Site-specific acetylation of the fetal globin activator NF-E4 prevents its ubiquitination and regulates its interaction with the histone deacetylase, HDAC1.](#)

Zhao Q, Cumming H, Cerruti L, Cunningham JM, Jane SM.

The Journal of Biological Chemistry 2004 Oct; 279(40):41477.

Application: WB, Human, K-562 cells

- [Restoration of transforming growth factor-beta signaling through receptor RI induction by histone deacetylase activity inhibition in breast cancer cells.](#)

Ammanamanchi S, Brattain MG.

The Journal of Biological Chemistry 2004 Jul; 279(31):32620.

Application: WB, Human, MCF-7, ZR75 cells

Pathway

- [Cell cycle](#)
- [Chronic myeloid leukemia](#)
- [Notch signaling pathway](#)
- [Pathways in cancer](#)

Disease

- [Asthma](#)
- [Cognition Disorders](#)
- [Genetic Predisposition to Disease](#)
- [Huntington disease](#)
- [Mental Status Schedule](#)
- [Neoplasms](#)
- [Ovarian cancer](#)
- [Ovarian Neoplasms](#)
- [Tobacco Use Disorder](#)