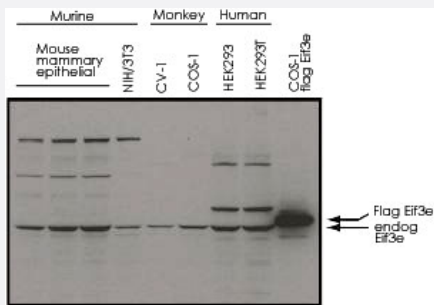


# Eif3e polyclonal antibody

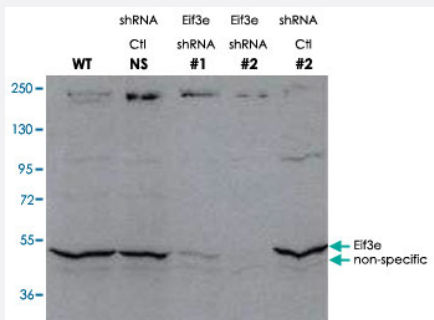
Catalog # PAB10203      Size 100 ug

## Applications



### Western Blot (Cell lysate)

Western blot using Eif3e polyclonal antibody (Cat # PAB10203) shows detection of endogenous Eif3e in whole cell extracts from murine (HC-11 and NIH/3T3), monkey (CV-1 and COS-1), and human (HEK293T) cell lines as well as over-expressed Eif3e (control transfected flag-tagged Eif3e). The identity of the higher and lower molecular weight bands is unknown. The band at ~48 KDa, indicated by the arrowhead, corresponds to flag-tagged Eif3e. Primary antibody was used at 1:1000. Personal communication, J.Lee, NCI, Bethesda, MD.



### Western Blot (Recombinant protein)

Western blot using Eif3e polyclonal antibody (Cat # PAB10203) shows detection of endogenous Eif3e. Specific staining is not present in lysates containing lentiviral knockdown vectors (shRNA #1 and #2). Control vectors, specifically a scrambled sequence (Ctl NS) and a sequence against an unrelated gene (Ctl #2), were also used. Personal communication, J.Lee, NCI, Bethesda, MD.

## Specification

<b>Product Description</b>	Rabbit polyclonal antibody raised against synthetic peptide of Eif3e.
<b>Immunogen</b>	A synthetic peptide corresponding to C-terminus of mouse Eif3e.
<b>Host</b>	Rabbit
<b>Reactivity</b>	Bovine, Dog, Human, Monkey, Mouse, Rat
<b>Specificity</b>	This antibody is specific to mouse eIF3S6/Int6 protein.

Form	Liquid
Quality Control Testing	Antibody Reactive Against Synthetic Peptide.
Recommend Usage	ELISA (1:90000) Western Blot (1:1000) The optimal working dilution should be determined by the end user.
Storage Buffer	In 20 mM KH <sub>2</sub> PO <sub>4</sub> , 150 mM NaCl, pH 7.2 (0.01% sodium azide)
Storage Instruction	Store at 4°C. For long term storage store at -20°C. Aliquot to avoid repeated freezing and thawing.
Note	This product contains sodium azide: a POISONOUS AND HAZARDOUS SUBSTANCE which should be handled by trained staff only.

## Applications

- Western Blot (Cell lysate)

Western blot using Eif3e polyclonal antibody (Cat # PAB10203) shows detection of endogenous Eif3e in whole cell extracts from murine (HC-11 and NIH/3T3), monkey (CV-1 and COS-1), and human (HEK293T) cell lines as well as over-expressed Eif3e (control transfected flag-tagged Eif3e). The identity of the higher and lower molecular weight bands is unknown. The band at ~48 KDa, indicated by the arrowhead, corresponds to flag-tagged Eif3e.

Primary antibody was used at 1:1000. Personal communication, J.Lee, NCI, Bethesda, MD.

- Western Blot (Recombinant protein)

Western blot using Eif3e polyclonal antibody (Cat # PAB10203) shows detection of endogenous Eif3e. Specific staining is not present in lysates containing lentiviral knockdown vectors (shRNA #1 and #2. Control vectors, specifically a scrambled sequence (Ctl NS) and a sequence against an unrelated gene (Ctl #2), were also used.

Personal communication, J.Lee, NCI, Bethesda, MD.

- Enzyme-linked Immunoabsorbent Assay

## Gene Info — Eif3e

Entrez GeneID	<a href="#">16341</a>
Protein Accession#	<a href="#">NP_032414;P60229</a>
Gene Name	Eif3e
Gene Alias	48kDa, Eif3s6, Int6, eIF3-p46, eIF3-p48
Gene Description	eukaryotic translation initiation factor 3, subunit E

Gene Ontology	<a href="#">Hyperlink</a>
Gene Summary	O
Other Designations	eukaryotic translation initiation factor 3, subunit 6 eukaryotic translation initiation factor 3, subunit 6 48kDa mammary tumor integration site 6

## Publication Reference

- [A new common integration site, Int7, for the mouse mammary tumor virus in mouse mammary tumors identifies a gene whose product has furin-like and thrombospondin-like sequences.](#)

Lowther W, Wiley K, Smith GH, Callahan R.

Journal of Virology 2005 Aug; 79(15):10093.

- [Int6 expression can predict survival in early-stage non-small cell lung cancer patients.](#)

Buttitta F, Martella C, Barassi F, Felicioni L, Salvatore S, Rosini S, D'Antuono T, Chella A, Mucilli F, Sacco R, Mezzetti A, Cuccurullo F, Callahan R, Marchetti A.

Clinical Cancer Research 2005 May; 11(9):3198.

- [Fission yeast Int6 is not essential for global translation initiation, but deletion of int6\(+\) causes hypersensitivity to caffeine and affects spore formation.](#)

Bandyopadhyay A, Matsumoto T, Maitra U.

Molecular Biology of the Cell 2000 Nov; 11(11):4005.

Application: WB-Ce, Rabbit, Reticulocyte